

CASE REPORT

Open Access



Mitral annuloplasty with the interatrial groove-left atrial dome approach in a patient with Marfan syndrome

Fengjie Chen¹, Xiang Wang¹, Xianmian Zhuang¹ and Hongwei Guo^{2*}

Abstract

Background: The choice of mitral valve surgical approach has always been a difficult problem in patients with small left atrium.

Case presentation: We report a case of a patient with Marfan syndrome who underwent the David operation and mitral annuloplasty. The patient had a small left atrium, so we severed the superior vena cava and opened the interatrial groove and left atrial dome. This method allows for excellent exposure of the mitral valve and subvalvular apparatus, enabling a successful operation.

Conclusion: The interatrial groove-left atrial dome approach provides an option for patients with a small left atrium undergoing mitral valve surgery.

Keywords: Small left atrium, Mitral valve, The interatrial groove-left atrial dome approach

Introduction

For patients with a small left atrium (LA) undergoing mitral valve (MV) surgery, the choice of surgical route has always been challenging. We report a case of a patient with Marfan syndrome (MFS) and a small LA who underwent mitral annuloplasty through the interatrial groove-left atrial dome approach and the David operation. The operation achieved good early results.

Case presentation

A 43-year-old male was admitted to our hospital with a 12-month history of shortness of breath and palpitations following physical exertion. Ultrasonography showed MV prolapse with mild to moderate regurgitation and mild aortic regurgitation, and the anteroposterior

diameters of the LA, aortic valve annulus, ascending aorta and aortic sinus were 20 mm, 27 mm, 32 mm and 54 mm, respectively. Chest radiography showed bilateral bullae, scoliosis, and pectus excavatum (Fig. 1). Chest computed tomography showed an aortic root aneurysm, that the anteroposterior diameter of the thorax was flattened, and that the LA was compressed (Fig. 2). The electrocardiogram.

was normal. Considering the family history of MFS, genetic testing showed FBN1 mutations.

Surgery was performed through a median sternotomy. Cardiopulmonary bypass was established through the ascending aorta, superior vena cava (SVC), and inferior vena cava. The proximal end of the SVC was clamped and transected, taking care not to damage the sinus node. The interatrial groove and left atrial dome were exposed through an incision measuring approximately 4 cm (Fig. 3a). The MV and subvalvular apparatus were exposed, and a No. 32 Medtronic C-ring was implanted for mitral annuloplasty. The atrial incision and incision in the SVC were closed with running 5–0 Prolene sutures (Fig. 3b). The David

*Correspondence: ghwdr@sina.com

² Departments of Cardiovascular Surgery, Fuwai Hospital, National Center for Cardiovascular Diseases, Chinese Academy of Medical Sciences and Peking Union Medical College, Beijing 100037, China
Full list of author information is available at the end of the article



© The Author(s) 2022. **Open Access** This article is licensed under a Creative Commons Attribution 4.0 International License, which permits use, sharing, adaptation, distribution and reproduction in any medium or format, as long as you give appropriate credit to the original author(s) and the source, provide a link to the Creative Commons licence, and indicate if changes were made. The images or other third party material in this article are included in the article's Creative Commons licence, unless indicated otherwise in a credit line to the material. If material is not included in the article's Creative Commons licence and your intended use is not permitted by statutory regulation or exceeds the permitted use, you will need to obtain permission directly from the copyright holder. To view a copy of this licence, visit <http://creativecommons.org/licenses/by/4.0/>. The Creative Commons Public Domain Dedication waiver (<http://creativecommons.org/publicdomain/zero/1.0/>) applies to the data made available in this article, unless otherwise stated in a credit line to the data.

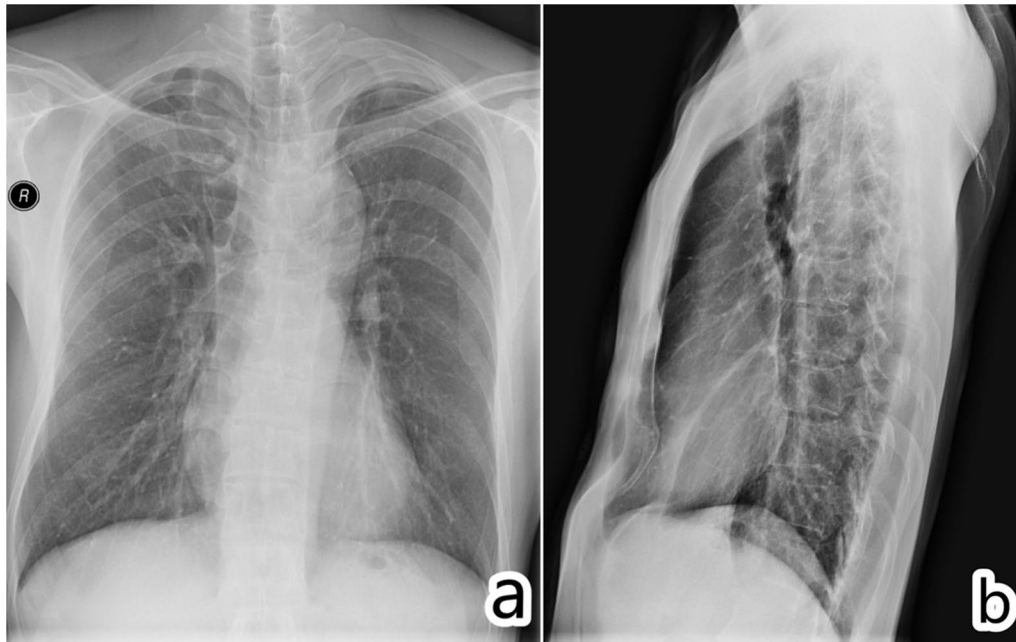


Fig. 1 Chest radiographs. **a** Bilateral bullae, scoliosis; **b** Pectus excavatum

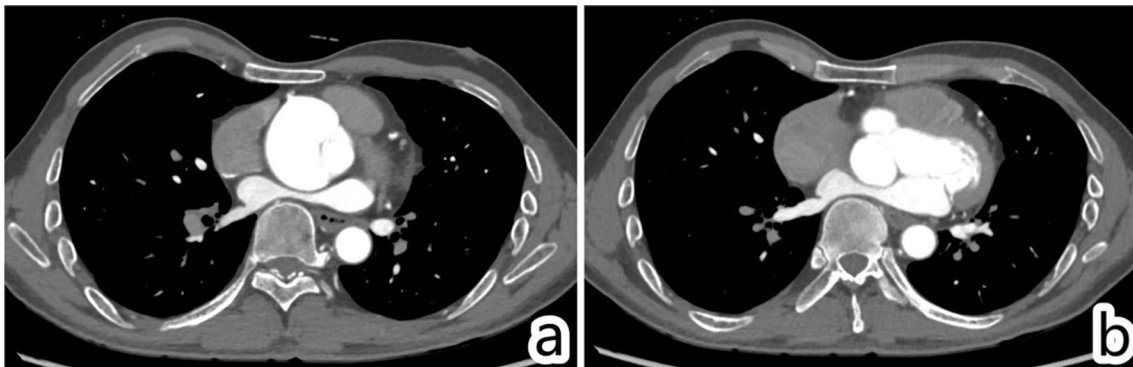


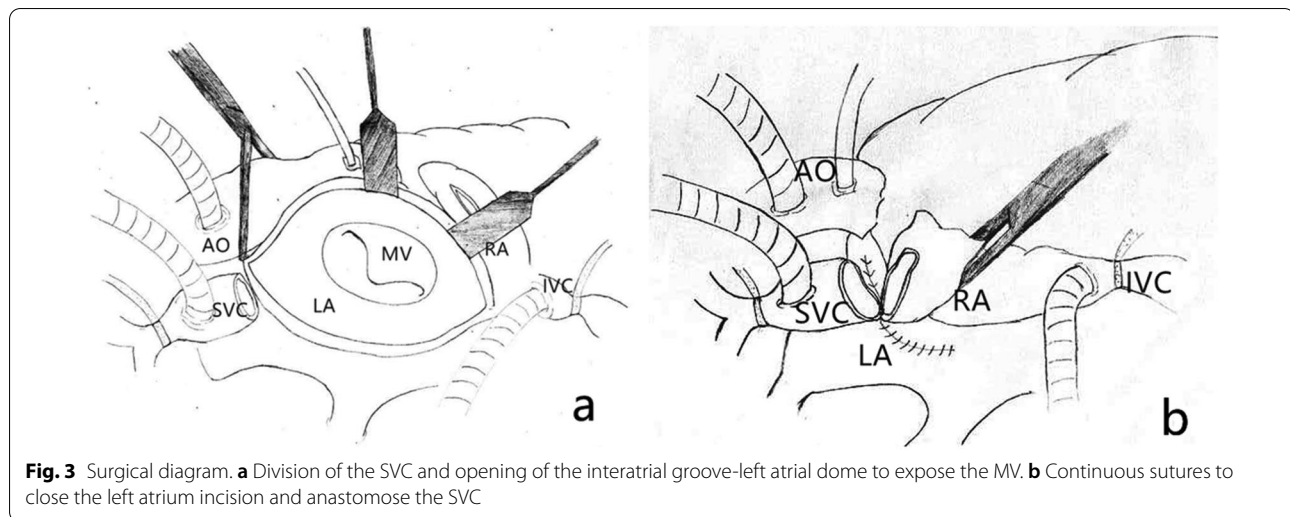
Fig. 2 Chest computed tomography. **a** Aortic sinus aneurysm, approximately 54 mm in diameter; **b** the LA was compressed by the thoracic spine and aortic sinus aneurysm, with an anteroposterior diameter of only 20 mm

operation was performed to treat the aortic root lesions. The cardiopulmonary bypass time was 334 min, and the cross-clamp time was 279 min. Intraoperative esophageal ultrasound showed minimal MV regurgitation and aortic valve regurgitation.

The postoperative hospital stay was 12 days. After 3 months of follow-up, the patient recovered well without complications such as arrhythmia and conduction block.

Discussion and conclusions

The most commonly used approaches for MV surgery is the right atrium-atrial septum or interatrial groove approach, which can achieve satisfactory exposure in most cases; However, for special cases such as patients with a small LA, pericardial adhesions, or deep chest, it may be difficult to obtain satisfactory exposure with the conventional approach.



The patient in this case had a thoracic deformity. The LA was compressed by the thoracic spine and an aortic sinus tumor, which significantly reduced the anteroposterior diameter of the LA. It would have been difficult to obtain satisfactory MV exposure through the conventional approach. Some scholars have performed MV surgery through the left atrial dome approach and achieved

good results [1, 2], and this approach is also suitable for patients with a small LA [3]. However, the patient had an aortic sinus aneurysm, which narrowed the gap between the aorta and the SVC. A simple left atrial dome incision would be too narrow to obtain satisfactory exposure. Therefore, we severed the SVC and combined the interatrial groove and left atrial dome approaches. This method can effectively increase exposure of the operative field and improve the surgical results, without complications such as arrhythmia or conduction block after the operation. Some authors believe that for patients with a small LA, division of the SVC for extended left atriotomy in MV operations is a viable approach [4, 5].

In summary, the interatrial groove-left atrial dome approach is an option for patients with a small LA for whom it is difficult to expose the MV.

Abbreviations

LA: Left atrium; MV: Mitral valve; MFS: Marfan syndrome; SVC: Superior vena cava.

Acknowledgements

We appreciate Shenzhen Key Medical Discipline Construction Fund for financial supports

Author contributions

FC and H.G. substantial contributions to the conception or design of the work; or the acquisition, analysis or interpretation of data for the work. X.W and X.C. prepared Fig. 1–3, drafting the work or revising it critically for important

intellectual content. All authors reviewed the manuscript and final approval of the version to be published.

Funding

Shenzhen Key Medical Discipline Construction Fund (No. SZXK019).

Availability of data and materials

The datasets used and/or analysed during the current study are available from the corresponding author on reasonable request.

Declarations

Ethics approval and consent to participate

The case is presented anonymously, and patient consent and hospital approval have been obtained for publication. All methods were performed in accordance with the Declaration of Helsinki. This study followed the ethical standards of Fuwai Hospital Chinese Academy of Medical Sciences research committee with the ethics committee code number of SP2022035(01).

Consent for publication

The patient provided signed informed consent forms.

Competing interests

The authors declare that they have no competing interests.

Author details

¹Department of Vascular Surgery, Fuwai Hospital Chinese Academy of Medical Sciences, Shenzhen, China. ²Departments of Cardiovascular Surgery, Fuwai Hospital, National Center for Cardiovascular Diseases, Chinese Academy of Medical Sciences and Peking Union Medical College, Beijing 100037, China.

Received: 15 March 2022 Accepted: 5 November 2022

Published online: 19 November 2022

References

- Esposito G, Cappabianca G, Bichi S, Patrini D, Pellegrino P. Left atrial roof: an alternative minimal approach for mitral valve surgery. *Innovations (Phila)*. 2012;7(6):417–20.
- Légaré JF, Buth KJ, Arora RC, Murphy DA, Sullivan JA, Hirsch GM. The dome of the left atrium: an alternative approach for mitral valve repair. *Eur J Cardiothorac Surg*. 2003;23(3):272–6.

3. Ahmed AF, Abd Al Jawad MN. Left atrial roof incision for mitral valve interventions and left atrial mass resection: a safe alternative for excellent exposure. A single center experience. *Heart Surg Forum*. 2018;21(3):E215–20.
4. Kyger ER 3rd, Coselli M, Kalchoff WP. A method for improved exposure of the mitral valve: cannulation of innominate vein and division of superior vena cava for extended left atriotomy in mitral valve operations. *J Thorac Cardiovasc Surg*. 1986;91(1):143–6.
5. Hadama T, Shirabe J, Takasaki H, et al. Extended left atriotomy by temporary division of the superior vena cava. [*Zasshi*] [Journal]. *Nihon Kyōbu Geka Gakkai*. 1991;39(4):409–12.

Publisher's Note

Springer Nature remains neutral with regard to jurisdictional claims in published maps and institutional affiliations.

Ready to submit your research? Choose BMC and benefit from:

- fast, convenient online submission
- thorough peer review by experienced researchers in your field
- rapid publication on acceptance
- support for research data, including large and complex data types
- gold Open Access which fosters wider collaboration and increased citations
- maximum visibility for your research: over 100M website views per year

At BMC, research is always in progress.

Learn more biomedcentral.com/submissions

