

REVIEW

Open Access

Persufflation (gaseous oxygen perfusion) as a method of heart preservation

Thomas M Suszynski¹, Michael D Rizzari^{1,2}, William E Scott III^{1,3}, Peter M Eckman⁴, James D Fonger⁵, Ranjit John⁶, Nicolas Chronos⁵, Linda A Tempelman⁷, David ER Sutherland¹ and Klearchos K Papas^{1,3*}

Abstract

Persufflation (PSF; gaseous oxygen perfusion) is an organ preservation technique with a potential for use in donor heart preservation. Improved heart preservation with PSF may improve outcomes by maintaining cardiac tissue quality in the setting of longer cold ischemia times and possibly increasing the number of donor hearts available for allotransplant. Published data suggest that PSF is able to extend the cold storage times for porcine hearts up to 14 hours without compromising viability and function, and has been shown to resuscitate porcine hearts following donation after cardiac death. This review summarizes key published work on heart PSF, including prospective implications and future directions for PSF in heart transplantation. We emphasize the potential impact of extending preservation times and expanding donor selection criteria in heart allotransplant. Additionally, the key issues that need to be addressed before PSF were to become a widely utilized preservation strategy prior to clinical heart transplantation are summarized and discussed.

Keywords: Organ preservation, Heart transplantation, Ischemia, Perfusion

Introduction

Recent advances in organ preservation have enabled improved donor organ quality even in the setting of prolonged cold ischemia time (CIT). For example, strong evidence now exists and supports the use of hypothermic machine perfusion (HMP) during kidney preservation [1-5], and excellent results were recently attained in the first human clinical trials using HMP during liver preservation [6]. It is believed that the use of HMP can extend allowable periods of CIT without reducing the overall metabolic quality of the organ [5]. In the case of kidney transplantation, the extended time window may further simplify the logistics of organ transportation from the procurement site to the transplant center, and facilitate distribution of kidneys across United Network of Organ Sharing (UNOS) regions. In the case of heart transplantation (unlike kidney transplantation), extended CIT would enable transplantation of many more hearts since prolonged preservation times are detrimental for

heart transplant as historical data suggest that poorer outcomes follow >4-6 hours of CIT [7]. The short allowable CIT poses significant logistical challenges and constrains heart allocation to a relatively small geographic area compared to other organs. Delays often occur at the procurement site following thoracotomy in lieu of communication with the transplant center to allow for preparation of the recipient for transplant, particularly in the case of a difficult reoperative chest. Furthermore, the current time constraints effectively preclude human leukocyte antigen (HLA) matching, which may offer significant advantages for long-term graft and patient survival [8]. The inability to extend cold storage time may also limit successful organ placement. With prospective heart transplant recipients filling waiting lists, some of whom are not eligible for ventricular assist devices, the need to increase the number of transplantable hearts is pressing.

A key area of research lies in the optimization of oxygen delivery during hypothermic preservation. It has been shown that conventional static cold storage (SCS) techniques are incapable of providing sufficient oxygen to the core of a large (human-sized) organ, and can only oxygenate to a maximum approximate depth of a millimeter

* Correspondence: kkpapas@email.arizona.edu

¹Division of Transplantation, Department of Surgery, University of Minnesota, Minneapolis, MN, USA

³Institute for Cellular Transplantation, Department of Surgery, University of Arizona, 1656 E. Mabel Street, Room 121, Tucson, AZ 85724, USA

Full list of author information is available at the end of the article

from the surface [9]. Most efforts to improve the oxygen solubility of cold preservation solutions by using perfluorocarbons have proven largely ineffective, because these methods still rely on oxygen delivery by passive diffusion from the surface alone. Even HMP, which has been designed to deliver cold preservation solutions into the organ via the native vasculature, may fail at delivering adequate oxygen to an organ during preservation, such as when the perfusate is not saturated with oxygen at a higher than atmospheric oxygen partial pressure [10]. It is in this regard that persufflation (PSF) or gaseous oxygen perfusion may provide additional advantages as compared to either SCS or HMP. Although not a new concept, PSF can be considered an emerging (or reemerging) technique for organ preservation and deserves considerable attention for a variety of compelling reasons, including the unique capability to deliver oxygen gas or gas mixture directly into an organ by using the native vasculature. *Compared with SCS and HMP, PSF may represent the best opportunity to fully oxygenate a human-sized organ, such as the human donor heart prior to clinical transplant.*

The earliest experimental uses of oxygen PSF involved the heart, particularly as a preservation technique during experimental cardiopulmonary bypass (CPB). These initial studies demonstrated that gaseous oxygen can be utilized by myocardial tissue during periods of ischemia and that heart function can be restored following short-term PSF. Between the late 1960s and 1990s, investigation of PSF for heart preservation had slowed. The reasons for this are somewhat unclear, but perhaps the utility of PSF with other organs (i.e., kidney, liver) garnered more appeal during this interim. Recently, however, cardiac PSF has experienced rekindled interest. As detailed in this review, several studies have been published recently in which PSF was used in preservation prior to experimental heart transplantation. Among the more intriguing applications has been the use of PSF to preserve hearts following donation after cardiac death (DCD) and short periods of warm ischemia. A timeline of the more significant work in cardiac PSF is shown in Figure 1. The collective results over the years have, at

minimum, suggested that cardiac PSF is technically feasible and has potential for preservation of heart tissue.

Review

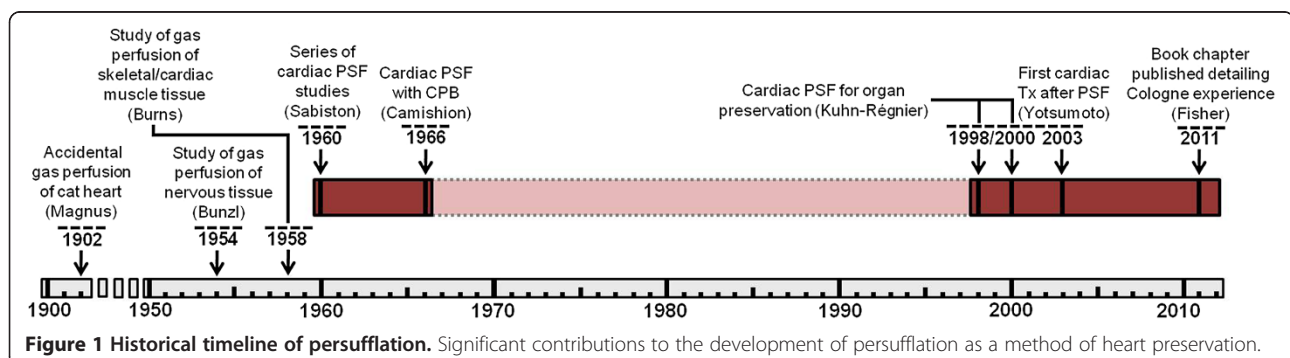
Early history of persufflation

PSF was accidentally discovered in 1902 by Rudolf Magnus while studying *ex vivo* blood perfusion of isolated feline hearts [11]. In an experiment, a blood-containing reservoir had unexpectedly emptied and compressed oxygen gas, which was used to drive blood perfusion, was pulled into the perfusion circuit and in through the coronary vasculature. Magnus observed that the heart continued to contract for several minutes while being perfused (or persufflated) with oxygen gas instead of blood.

These earliest observations gave way to a series of additional experiments performed by Magnus [11]. Not until the mid-1950s was PSF studied more extensively by a group at McGill University in Montreal [12,13]. In 1954, Bunzl *et al.* compared the benefits of PSF versus liquid perfusion in a frog spinal reflex model, showing that peripheral nerve reflexes and muscle contractions could be preserved for up to 6–8 hours with PSF [12]. At that time, the authors observed a lack of edema formation and improved oxygenation with PSF. In 1958, Burns *et al.* showed that rabbit heart function could be preserved for 3 hours using PSF [13]. This early work prompted others to pursue cardiac PSF.

Early experiences in cardiac persufflation

In 1959, Sabiston *et al.* explored the use of PSF in conjunction with CPB, a technique that was new to cardiac surgery during that era [14]. In a first set of experiments, the authors showed that canine hearts would continue to beat for an average duration of 5 hours (2.5-8 hours, range) at 37°C using continuous *ex vivo* anterograde PSF (A-PSF) with humidified gaseous carbogen (95% O₂, 5% CO₂). They observed sustained cardiac contractility during the first 2–3 hours of PSF, with gradual weakening over time. In a second set of experiments, the authors performed *in situ* A-PSF for 25–30 minutes after which



normal coronary blood flow was restored. They showed normal restoration of hemodynamic function in most animals, with several animals maintaining a heartbeat for 48 hours. *The key conclusions of this study were that 1) the heart is able use oxygen gas via PSF during periods of ischemia and 2) that normal hemodynamic parameters and coronary blood flow can be reestablished after PSF.*

In 1960, Talbert *et al.* introduced the concept of retrograde PSF (R-PSF) [15]. At the time, retrograde perfusion of oxygenated blood via the coronary sinus was used to maintain a heartbeat and protect the heart from ischemia for short periods of time during open aortic valve procedures [16,17]. In their studies, R-PSF via the coronary sinus was able to maintain a visible heartbeat for an average duration of 3.5 hours (2–4 hours, range). If the anterior cardiac veins were cannulated in addition to the coronary sinus, R-PSF was even more effective; a visible beat was maintained for an average duration of 5.5 hours (Figure 2). The authors also compared R-PSF with A-PSF and determined that *the heartbeat was visibly weaker and sustained for a shorter period of time using the retrograde approach*, indicating that A-PSF may be the best-suited approach for heart preservation.

In 1966, Camishion *et al.* published an article that took Talberts' concept of R-PSF and applied it during CPB [18]. Despite the earlier work displaying the superiority of A-PSF, there was a clear advantage to R-PSF within the context of CPB: R-PSF would not obstruct the surgical view over the aortic valve (because it did not involve cannulation of the coronary arteries). To

address the question of whether R-PSF could preserve a heart during CPB, Talberts' previous work on *in situ* R-PSF was basically repeated [15]. In a first experiment they found that R-PSF with oxygen gas maintained sinus rhythm in all canine hearts (n=10) for >30 minutes, and that R-PSF with nitrogen gas abolished sinus rhythm at ≤ 5 minutes. In a second experiment, 83% of canine or porcine hearts maintained sinus rhythm for one hour of R-PSF during CPB. Following removal of CPB, 73% remained in sinus rhythm. In addition to establishing the utility of R-PSF with CPB, *the authors cited no evidence of air embolization in the brain or viscera of any experimental animal. They also commented on the difference between gas embolization and free gas flow (which characterizes PSF), one that is not yet fully appreciated by the clinical community and will need to be further validated by scientific investigation.* Interestingly, the authors also speculated on the possible use of PSF for donor heart preservation prior to cardiac transplantation, nearly 2 years before the first successful human heart transplant [19]. Several other studies were conducted in the late 1960s, including Gabel *et al.* (1966) [20] and Lochner *et al.* (1968) [21] publishing on the metabolism and function of rat, feline and guinea pig hearts.

Recent experiences in cardiac persufflation

During the next few decades (1970s-1990s), the use of PSF with kidney and liver became the focus of study in the field. The term 'persufflation' officially replaced 'gaseous oxygen perfusion' in 1971 [22]. Not until the late 1990s, however, was interest in cardiac PSF rekindled,

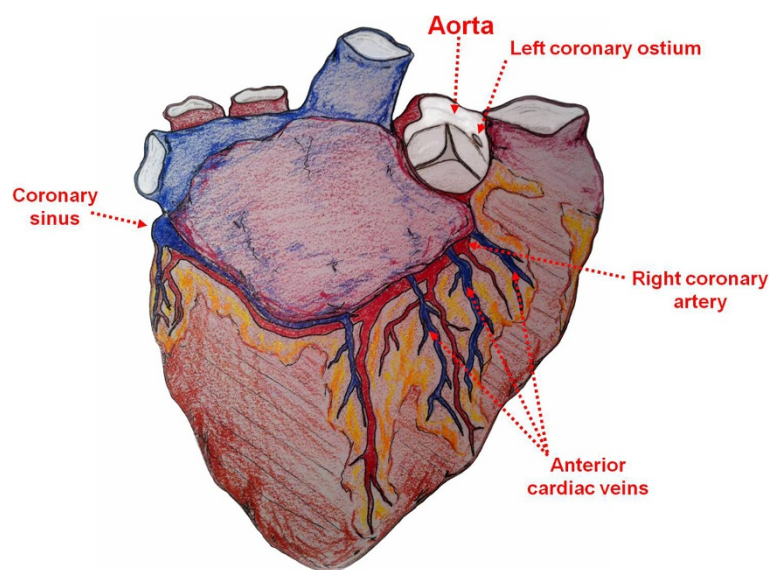


Figure 2 Cardiac anatomy relevant to persufflation. Sketch illustrating the cardiac anatomy that has been historically relevant to the development of persufflation; Anterograde persufflation has been performed via the aorta or direct cannulation of coronary ostia, whereas retrograde persufflation has been performed by cannulation of coronary sinus with or without cannulation of the anterior cardiac veins.

which may have been a result of the successful application of PSF in other organs.

In 1998, Kuhn-Regnier *et al.* published a study exploring the use of A-PSF prior to orthotopic porcine heart allotransplantation [23], a related study to the one published by Fischer *et al.* that same year [24]. The mean preservation time in this study was 14.5 hours. They reported that persufflated hearts exhibited a cardiac stroke work capacity that was similar when comparing pre-transplant versus post-transplant (which was also post-PSF and post-CPB) function, whereas that was not the case in organs preserved by SCS due to severe arrhythmia and ventricular dyskinesia experienced post-transplant. Furthermore, cardiac output (CO) in persufflated hearts was significantly higher than in hearts preserved by SCS alone. Their data indicated that A-PSF permitted improved recovery of post-transplant cardiac function when compared with SCS. They also noted less myocardial edema with A-PSF versus SCS, which is important since tissue edema has been shown to significantly impair cardiac function [25]. In 2000, Kuhn-Regnier *et al.* performed another study in which they compared the metabolic quality and post-transplant function of hearts preserved by A-PSF versus SCS, and showed that both were significantly improved in transplanted hearts following A-PSF [26].

Up to this point in history, most studies of heart PSF involved experimental procedures with hearts experiencing no “down-time” or conventional warm ischemia as seen with DCD. The possibility of resuscitating DCD hearts as a way to make more donor hearts available for transplant became an intriguing concept. In 2003, Yotsumoto *et al.* studied the effect of 3 hours of A-PSF on post-transplant cardiac function following a mean warm ischemia time (WIT) of 16.7 minutes in a porcine (orthotopic) allotransplant model [27]. They discovered that SCS hearts following zero WIT and persufflated hearts following the prescribed WIT could be weaned from CPB within 2 hours of transplantation, whereas the SCS hearts following the prescribed WIT exhibited significantly worse function and could not be weaned. At 1-hour of reperfusion, troponin T levels were significantly higher in hearts preserved by SCS following the prescribed WIT, versus either SCS following zero WIT or A-PSF following the prescribed WIT. At the end of a 3-hour reperfusion period, all parameters of cardiac function (including CO, left ventricular contractility, and relaxation velocity) were significantly higher in hearts preserved by A-PSF as compared to SCS. Their studies indicated that A-PSF of a heart following DCD may enable preservation comparable to SCS of a heart following conventional donation after brain death (with no WIT).

A major concern of the transplant field has been the risk of endothelial damage imposed by PSF due to the

introduction of pressured gas through the coronary vasculature. To address these concerns, studies were performed and have shown that the coronary arteries of porcine hearts following 3 hours of oxygen gas A-PSF exhibit normal endothelial function post-transplant [28-30]. Additionally, hearts transplanted following 14 hours of A-PSF showed no topographic signs of endothelial damage, as assessed by scanning electron microscopy [29]. Fischer recently published a book chapter in which the technical aspects of cardiac PSF are summarized [31] – including an important discussion regarding the development of an aortic valve guard to prevent gas efflux into the left ventricle during A-PSF via the coronaries. Table 1 summarizes the published work on heart PSF presented in this review.

It is unclear why PSF has not been pursued with more vigor. It may be that a stigma accompanies the concept of introducing gas into the vasculature and, consequently, has made clinicians skeptical of the potential utility of PSF. There have been clinical trials in liver and kidney transplantation using PSF as a method of organ preservation, however these have been limited [32,33]. Perhaps concern for endothelial damage via desiccation is another limiting factor – though gases can be humidified and, as mentioned previously, many studies have shown that the endothelium does not appear disrupted and remains functional [28,30] even following long-term (14 hours) preservation by PSF and 7 days after heterotopic transplant [29]. Another possibility is that the logistics and safety concerns of transporting pressurized oxygen gas are major deterrents, especially during air travel, which is quite common and often necessary with donor heart allocation and transplant. However, recent technological advancements in developing portable devices that are able to generate *in situ* oxygen from water (via the use of electrochemical cells) have provided a method to obviate the issue of having to use pressurized gas cylinders. These devices have been used to generate breathable oxygen for occupants of deployed submarines and for patients with chronic pulmonary disease requiring home oxygen therapy, and have been modified for use in organ preservation (Giner Inc., Newton, MA) [34,35]. The devices are small, easily transportable and also safe to use in air travel. These technologies could enable PSF to become more widely used as a preservation method for organ transplantation. The increasing use of DCD organs for transplantation has unmasked a clear need for further advancement in organ preservation, an area of research that has been stagnant in recent years. This technology may prove to be a catalyst for such an advancement.

Future implications and directions

Though the field of clinical transplantation has made considerable progress over the past half-century, an

Table 1 Summary of studies on heart persufflation

Year	Author(s) [Ref.]	Approach for PSF ^a	WIT (min)	Duration of PSF (hours)	Model(s)	Transplant follow-up	Gas used	Temp (°C)	Primary endpoint
<i>No transplant</i>									
1902	Magnus R [11]	A	-	≤ 1.15	Cat	-	O ₂ , H ₂ , CO ₂	24-28	Cardiac activity during PSF
1958	Burns <i>et al.</i> [13]	A	-	> 3	Rabbit	-	Carbogen ^b , N ₂	37	Cardiac activity during PSF
1959	Sabiston <i>et al.</i> [14]	A	-	< 8	Dog	-	Carbogen ^b , N ₂	37	Cardiac activity during PSF and after reperfusion
1960	Talbert <i>et al.</i> [15]	R	-	2-7	Dog	-	Carbogen ^b	37	Cardiac activity during PSF and reperfusion
1966	Camishion <i>et al.</i> [18]	R	-	< 7	Dog, Pig	-	O ₂ , N ₂	38	Cardiac activity during PSF
1966	Gabel <i>et al.</i> [20]	A	-	10	Cat	-	Carbogen ^b	40	Cardiac activity and metabolic profile during PSF
1968	Lochner <i>et al.</i> [21]	A	-	< 1.5	Guinea pig, Rat	-	Carbogen ^b	4-37	Cardiac activity, WOOCR and metabolic profile during PSF
2001	Fischer J [28]	A	16	3.3	Pig (DCD)	-	O ₂	0-1	Coronary endothelial function
2004	Fischer J [30]	A	16	3.3	Pig (DCD)	-	O ₂	0-1	Coronary endothelial function
<i>Transplant studies</i>									
1998	Kuhn-Regnier <i>et al.</i> [23]	A	-	14.5	Pig	3 hours	O ₂	0-1	Cardiac function and metabolic profile post-allotransplant (orthotopic)
1998	Fischer <i>et al.</i> [24]	A	-	14.2	Pig	3-4 hours	O ₂	0-1	Cardiac function and metabolic profile post-allotransplant (orthotopic)
2000	Kuhn-Regnier <i>et al.</i> [26]	A	-	14.5	Pig	3 hours	O ₂	0-1	Cardiac function and metabolic profile post-allotransplant (orthotopic)
2003	Yotsumoto <i>et al.</i> [27]	A	16.7	2.3	Pig (DCD)	3 hours	O ₂	0-1	Cardiac function and metabolic profile post-allotransplant (orthotopic)
2004	Kuhn-Regnier <i>et al.</i> [29]	A	-	14	Pig	7 days	O ₂	0-1	Endothelial and myocardial cell function post-allotransplant (heterotopic)

Superscripts: ^aEither anterograde via the coronary arteries (denoted by 'A') or retrograde via the coronary sinus and possibly anterior cardiac veins (denoted by 'R'); ^bCarbogen is defined as a gas mixture composed of 95% oxygen and 5% CO₂. *Abbreviations:* DCD, donation after cardiac death; PSF, persufflation; WOOCR, whole organ oxygen consumption rate.

indisputable and persistent problem has been the donor organ shortage. Expansion of organ acceptance criteria, DCD, living donation, paired donor exchanges, and improving preservation methodology have all been strategies employed to increase the quantity of organs available for transplant [36-42]. Unfortunately, many of these strategies are not applicable in heart transplantation for obvious reasons, and suggest that improved organ preservation may be of particular importance in the case of the heart. It is conceivable that improved preservation techniques could lengthen the allowable CIT, which would provide some relief to the demanding logistical provisions that are needed during the allocation and transport of a donor heart. A substantial lengthening of the allowable CIT may even allow for HLA matching, which is currently not done routinely due to the limited time and may have a favorable impact on short- and long-term outcomes.

As described above, the opportunity to use PSF in the case of DCD hearts is intriguing. Currently it is perceived that the poor quality of the DCD heart does not merit the investment of resources required for their recovery and the added risk absorbed by the potential recipient. The opportunity to resuscitate organs damaged by prolonged WIT and to better prevent their deterioration during storage should provide the impetus to pursue the development of promising preservation strategies such as PSF. Even if improvements in preservation strategy do not lead to an immediate increase in the number of transplantable organs, an incremental improvement in this area should be welcomed. The motivation for this is reflected in the significant average attrition rate of the heart waitlist (due to deterioration in health or death) of about 20% per year (based on data from 2001–2009) (UNOS Data as of April 30th, 2010). Consequently, seeking better ways to

recover and preserve a greater number of suitable organs should continue to be a primary objective.

To expand the acceptance and utilization of PSF in organ preservation, the technique must be further developed. Future work in PSF should involve: 1) continued optimization of technique and/or operational parameters (e.g., pO₂, pressures, cannulation approach, etc.) so they are tailored to the tissue/organ-of-interest; 2) exploration of its use in conjunction with other preservation techniques (such as with HMP); or 3) as a method to condition organs prior to reperfusion (endischemic conditioning); 4) direct comparison with other well-accepted preservation techniques; 5) development of portable PSF systems (such as the electrochemical oxygen concentrator); 6) the identification of single or multiple pharmacologic agents used to prevent or reduce ischemia-reperfusion injury; and 7) confirmation that *ex vivo* PSF should not be considered analogous to *in vivo* gas embolization, and education of the clinical community regarding that embolization should not occur if PSF is performed properly.

In addition to its application with donor hearts prior to transplant, PSF may have utility during open cardiac surgery. As reviewed herein, the early works by Sabiston and Talbert *et al.* [14,15], and Camishion *et al.* [18] have inspired a reevaluation of the current method of preservation during cardiac standstill [31,43] and may suggest that PSF could improve outcomes following some or all cardiac surgery requiring CPB. The duration of cold ischemia involved during most coronary arterial bypass or valve procedures is relatively short (60–90 minutes) and does not seem to directly cause irreversible cardiac complications. Though supported by our current practice, this conventional understanding may need challenging. It could be that improved oxygenation during this relatively short period may reduce the complications that are believed to be associated with prolonged cross-clamp times (reduced ventricular compliance, poor inotropy, dysrhythmia, myocardial infarction, and others), but this hypothesis would need to be tested rigorously.

Conclusions

As described in this review, oxygen gas delivered by PSF can be used by the heart during hypothermic preservation. PSF has shown that it may be capable of extending the allowable WIT and CIT and may maintain superior organ quality when compared with SCS. The basis behind the intervention of PSF is to provide an adequate oxygen supply to an organ during preservation. Data collected over decades has confirmed that improved oxygenation is better for maintaining the quality of an organ and, in some cases, enables the recovery of reversibly damaged tissue. Studies presented in this review have demonstrated PSF exhibits the capacity to improve

or maintain the metabolic quality and function of the heart following procurement for transplantation. A major potential benefit to the use of PSF lies in the possibility to increase the number of suitable heart available for transplantation.

Abbreviations

A-PSF: Anterograde perfusation; CIT: Cold ischemia time; CO: Cardiac output; CPB: Cardiopulmonary bypass; DCD: Donation after cardiac death; HMP: Hypothermic machine perfusion; HLA: Human leukocyte antigen; PSF: Perfusation; R-PSF: Retrograde perfusation; SCS: Static cold storage; UNOS: United Network for Organ Sharing; WIT: Warm ischemia time.

Competing interests

TMS, MDR, WESIII, LT and KKP are co-inventors on published patent applications for technology associated with perfusation. LT is an employee of Giner, Inc. – which is a company that produces portable electrochemical oxygen concentrator units that can be used for perfusation. PME, JDF, RJ, NC and DERS have no conflicts of interest.

Authors' contributions

TMS, MDR, JDF, RJ, NC, LAT and KKP were involved in the conception of the review. TMS, MDR, WESIII, PME and KKP drafted the review. All authors were involved in revising the manuscript. TMS, PME and KKP provided final approval. All authors read and approved the final manuscript.

Acknowledgements

The authors would like to thank the Institute for Engineering in Medicine at the University of Minnesota for sponsoring some of this work.

Funding

We would like to acknowledge financial support from NIH/NIDDK grant R44 DK070400.

Author details

¹Division of Transplantation, Department of Surgery, University of Minnesota, Minneapolis, MN, USA. ²Department of Surgery, University of Texas Southwestern Medical Center, Dallas, TX, USA. ³Institute for Cellular Transplantation, Department of Surgery, University of Arizona, 1656 E. Mabel Street, Room 121, Tucson, AZ 85724, USA. ⁴Division of Cardiovascular Medicine, Department of Medicine, University of Minnesota, Minneapolis, MN, USA. ⁵St. Josephs Translational Research Institute, Atlanta, GA, USA. ⁶Division of Cardiothoracic Surgery, Department of Surgery, University of Minnesota, Minneapolis, MN, USA. ⁷Giner Inc, Newton, MA, USA.

Received: 22 January 2013 Accepted: 11 March 2013

Published: 22 April 2013

References

1. Taylor MJ, Baicu SC: Current state of hypothermic machine perfusion preservation of organs: the clinical perspective. *Cryobiology* 2010, **60**:S20–S35.
2. Moers C, Smits JM, Maathuis MH, Treckmann J, van Gelder F, Napieralski BP, van Kasterop-Kutz M, van der Heide JJ, Squifflet JP, van Heurn E, *et al*: Machine perfusion or cold storage in deceased-donor kidney transplantation. *N Engl J Med* 2009, **360**:7–19.
3. Kwiatkowski A, Wszola M, Kosieradzki M, Danielewicz R, Ostrowski K, Domagala P, Lisik W, Nosek R, Fesolowicz S, Trzebicki J, *et al*: Machine perfusion preservation improves renal allograft survival. *Am J Transplant* 2007, **7**:1942–1947.
4. Hosgood SA, Yang B, Bagul A, Mohamed IH, Nicholson ML: A comparison of hypothermic machine perfusion versus static cold storage in an experimental model of renal ischemia reperfusion injury. *Transplantation* 2010, **89**:830–837.
5. Ciancio G, Gaynor JJ, Sageshima J, Chen L, Roth D, Kupin W, Guerra G, Tueros L, Zarak A, Hanson L, *et al*: Favorable outcomes with machine perfusion and longer pump times in kidney transplantation: a single-center, observational study. *Transplantation* 2010, **90**:882–890.
6. Guarrera JV, Henry SD, Samstein B, Odeh-Ramadan R, Kinkhabwala M, Goldstein MJ, Ratner LE, Renz JF, Lee HT, Brown RS Jr, Emond JC:

- Hypothermic machine preservation in human liver transplantation: the first clinical series. *Am J Transplant* 2010, **10**:372–381.
7. Young JB, Hauptman PJ, Naftel DC, Ewald G, Aaronson K, Dec GW, Taylor DO, Higgins R, Platt L, Kirklín J: **Determinants of early graft failure following cardiac transplantation, a 10-year, multi-institutional, multivariable analysis.** *J Heart Lung Transplant* 2001, **20**:212.
 8. Kaczmarek I, Deutsch MA, Rohrer ME, Beiras-Fernandez A, Groetzner J, Daebritz S, Schmoeckel M, Spannagl M, Meiser B, Reichart B: **HLA-DR matching improves survival after heart transplantation: is it time to change allocation policies?** *J Heart Lung Transplant* 2006, **25**:1057–1062.
 9. Papas KK, Hering BJ, Guenther L, Rappel MJ, Colton CK, Avgoustiniatos ES: **Pancreas oxygenation is limited during preservation with the two-layer method.** *Transplant Proc* 2005, **37**:3501–3504.
 10. Weegman BP, Kirchner VA, Scott WE 3rd, Avgoustiniatos ES, Suszynski TM, Ferrer-Fabrega J, Rizzari MD, Kidder LS, Kandaswamy R, Sutherland DE, Papas KK: **Continuous real-time viability assessment of kidneys based on oxygen consumption.** *Transplant Proc* 2010, **42**:2020–2023.
 11. Magnús R: **Die Thätigkeit des überlebenden Säugethierherzens bei Durchströmung mit Gasen.** *Arch Exp Path Pharmacol* 1902, **47**:200–208.
 12. Bunzl A, Burgen AS, Burns BD, Pedley N, Terroux KG: **Methods for studying the reflex activity of the frog's spinal cord.** *Br J Pharmacol Chemother* 1954, **9**:229–235.
 13. Burns BD, Robson JG, Smith GK: **The survival of mammalian tissues perfused with intravascular gas mixtures of oxygen and carbon dioxide.** *Can J Biochem Physiol* 1958, **36**:499–504.
 14. Sabiston DC Jr, Talbert JL, Riley LH Jr, Blalock A: **Maintenance of the heart beat by perfusion of the coronary circulation with gaseous oxygen.** *Ann Surg* 1959, **150**:361–370.
 15. Talbert JL, Riley LH Jr, Sabiston DC Jr, Blalock A: **Retrograde perfusion of the coronary sinus with gaseous oxygen.** *Am Surg* 1960, **26**:189–192.
 16. Gott VL, Gonzalez JL, Zuhdi MN, Varco RL, Lillehei CW: **Retrograde perfusion of the coronary sinus for direct vision aortic surgery.** *Surg Gynecol Obstet* 1957, **104**:319–328.
 17. Massimo C, Boffi L, Pozzi L: **Sinusal standstill with ventricular automatism during retrograde perfusion of the coronary sinus under hypothermia for direct surgical approach to the aortic valves: an experimental study.** *J Thorac Surg* 1958, **36**:227–229.
 18. Camishion RC, Davies AL, Tokunaga K, Solit RW: **Retrograde perfusion of the coronary arteries with gaseous oxygen cardiopulmonary bypass.** *Surgery* 1966, **59**:145–154.
 19. Barnard CN: **The operation. A human cardiac transplant: an interim report of a successful operation performed at Groote Schuur Hospital, Cape Town.** *S Afr Med J* 1967, **41**:1271–1274.
 20. Gabel LP, Bihler I, Dresel PE: **Contractility, metabolism and pharmacological reactions of isolated gas-perfused cat hearts.** *Circ Res* 1966, **19**:891–902.
 21. Lochner W, Arnold G, Müller-Ruchholtz ER: **Metabolism of the artificially arrested heart and of the gas-perfused heart.** *Am J Cardiol* 1968, **22**:299–311.
 22. Denecke H: **Recovery of the kidney from aerobic and anaerobic ischemia in deep hypothermia.** *Eur Surg Res* 1971, **3**:182.
 23. Kuhn-Regnier F, Fischer JH, Jeschkeit S: **Coronary oxygen persufflation for long-term myocardial protection.** *Thorac Cardiovasc Surg* 1998, **46**(Suppl 2):308–312.
 24. Fischer JH, Kuhn-Regnier F, Jeschkeit S, Switkowski R, Bardakcioglu O, Sobottke R, Rainer de Vivie E: **Excellent recovery after prolonged heart storage by preservation with coronary oxygen persufflation: orthotopic pig heart transplantations after 14-hr storage.** *Transplantation* 1998, **66**:1450–1459.
 25. Laine GA, Allen SJ: **Left ventricular myocardial edema. Lymph flow, interstitial fibrosis, and cardiac function.** *Circ Res* 1991, **68**:1713–1721.
 26. Kuhn-Regnier F, Fischer JH, Jeschkeit S, Switkowski R, Bardakcioglu O, Sobottke R, de Vivie ER: **Coronary oxygen persufflation combined with HTK cardioplegia prolongs the preservation time in heart transplantation.** *Eur J Cardiothorac Surg* 2000, **17**:71–76.
 27. Yotsumoto G, Jeschkeit-Schubbert S, Funcke C, Kuhn-Regnier F, Fischer JH: **Total recovery of heart grafts of non-heart-beating donors after 3 hours of hypothermic coronary oxygen persufflation preservation in an orthotopic pig transplantation model.** *Transplantation* 2003, **75**:750–756.
 28. Fischer J, Funcke C, Jeschkeit-Schubbert S, Yotsumoto G, Kuhn-Regnier F: **Coronary endothelial function in heart grafts of non-heart-beating donors (NHBD) after 3 h hypothermic COP-preservation and orthotopic transplantation in pigs.** *Eur Surg Res* 2001, **33**:130–131.
 29. Kuhn-Regnier F, Bloch W, Tsimpoulis I, Reismann M, Dagktekin O, Jeschkeit-Schubbert S, Funcke C, Fries JW, Addicks K, de Vivie ER, Fischer JH: **Coronary oxygen persufflation for heart preservation in pigs: analyses of endothelium and myocytes.** *Transplantation* 2004, **77**:28–35.
 30. Fischer JH, Funcke C, Yotsumoto G, Jeschkeit-Schubbert S, Kuhn-Regnier F: **Maintenance of physiological coronary endothelial function after 3.3 h of hypothermic oxygen persufflation preservation and orthotopic transplantation of non-heart-beating donor hearts.** *Eur J Cardiothorac Surg* 2004, **25**:98–104.
 31. Fischer JH: **Methods of Cardiac Oxygen Persufflation.** In *Organ Preservation and Reengineering*. Edited by Uygun K, Lee CY. Boston: Artech House Publisher; 2011:105–126.
 32. Flatmark A, Slaattellid O, Woxholt G: **Gaseous persufflation during machine perfusion of human kidneys before transplantation.** *Eur Surg Res* 1975, **7**:83–90.
 33. Treckmann J, Minor T, Saad S, Ozcelik A, Malago M, Broelsch CE, Paul A: **Retrograde oxygen persufflation preservation of human livers: a pilot study.** *Liver Transpl* 2008, **14**:358–364.
 34. Scott WE III, O'Brien TD, Ferrer-Fabrega J, Avgoustiniatos ES, Weegman BP, Anazawa T, Matsumoto S, Kirchner V, Rizzari M, Murtaugh MP, et al: **Persufflation improves pancreas preservation when compared with the two-layer method (TLM).** *Transplant Proc* 2010, **42**:2016–2019.
 35. Scott WE III, Weegman BP, Ferrer-Fabrega J, Stein SA, Anazawa T, Kirchner V, Rizzari M, Stone J, Matsumoto S, Hammer BE, et al: **Pancreas oxygen persufflation increases ATP levels as shown by nuclear magnetic resonance.** *Transplant Proc* 2010, **42**:2011–2015.
 36. Ferrari P, de Klerk M: **Paired kidney donations to expand the living donor pool.** *J Nephrol* 2009, **22**:699–707.
 37. Delmonico FL, Sheehy E, Marks WH, Baliga P, McGowan JJ, Magee JC: **Organ donation and utilization in the United States, 2004.** *Am J Transplant* 2005, **5**:862–873.
 38. Metzger RA, Delmonico FL, Feng S, Port FK, Wynn JJ, Merion RM: **Expanded criteria donors for kidney transplantation.** *Am J Transplant* 2003, **3**(Suppl 4):114–125.
 39. Ojo AO, Heinrichs D, Emond JC, McGowan JJ, Guidinger MK, Delmonico FL, Metzger RA: **Organ donation and utilization in the USA.** *Am J Transplant* 2004, **4**(Suppl 9):27–37.
 40. Roodnat JJ, Kalvan Gestel JA, Zuidema W, van Noord MA, van de Wetering J, IJzermans JN, Weimar W: **Successful expansion of the living donor pool by alternative living donation programs.** *Am J Transplant* 2009, **9**:2150–2156.
 41. Segev DL, Kucirka LM, Gentry SE, Montgomery RA: **Utilization and outcomes of kidney paired donation in the United States.** *Transplantation* 2008, **86**:502–510.
 42. Ojo AO, Hanson JA, Meier-Kriesche H, Okechukwu CN, Wolfe RA, Leichtman AB, Agodoa LY, Kaplan B, Port FK: **Survival in recipients of marginal cadaveric donor kidneys compared with other recipients and wait-listed transplant candidates.** *J Am Soc Nephrol* 2001, **12**:589–597.
 43. Arata K, Iguro Y, Yotsumoto G, Ueno T, Terai H, Sakata R: **Use of continuous retrograde gaseous oxygen persufflation for myocardial protection during open heart surgery.** *Surg Today* 2010, **40**:549–554.

doi:10.1186/1749-8090-8-105

Cite this article as: Suszynski et al.: Persufflation (gaseous oxygen perfusion) as a method of heart preservation. *Journal of Cardiothoracic Surgery* 2013 **8**:105.