

RESEARCH ARTICLE

Open Access

Self-reported physical activity and lung function two months after cardiac surgery – a prospective cohort study

Marcus Jonsson^{1,2*}, Charlotte Urell³, Margareta Emtner^{3,4} and Elisabeth Westerdahl^{1,2,5}

Abstract

Background: Physical activity has well-established positive health-related effects. Sedentary behaviour has been associated with postoperative complications and mortality after cardiac surgery. Patients undergoing cardiac surgery often suffer from impaired lung function postoperatively. The association between physical activity and lung function in cardiac surgery patients has not previously been reported.

Methods: Patients undergoing cardiac surgery were followed up two months postoperatively. Physical activity was assessed on a four-category scale (sedentary, moderate activity, moderate regular exercise, and regular activity and exercise), modified from the Swedish National Institute of Public Health's national survey. Formal lung function testing was performed preoperatively and two months postoperatively.

Results: The sample included 283 patients (82% male). Two months after surgery, the level of physical activity had increased ($p < 0.001$) in the whole sample. Patients who remained active or increased their level of physical activity had significantly better recovery of lung function than patients who remained sedentary or had decreased their level of activity postoperatively in terms of vital capacity ($94 \pm 11\%$ of preoperative value vs. $91 \pm 9\%$; $p = 0.03$), inspiratory capacity ($94 \pm 14\%$ vs. $88 \pm 19\%$; $p = 0.008$), and total lung capacity ($96 \pm 11\%$ vs. $90 \pm 11\%$; $p = 0.01$).

Conclusions: An increased level of physical activity, compared to preoperative level, was reported as early as two months after surgery. Our data shows that there could be a significant association between physical activity and recovery of lung function after cardiac surgery. The relationship between objectively measured physical activity and postoperative pulmonary recovery needs to be further examined to verify these results.

Keywords: Cardiac surgery, Lung function, Physical activity

Background

Physical activity has well-established health-related effects in both healthy and non-healthy individuals [1-4]. Recommendations on physical activity from the American Heart Association and the American College of Sports Medicine state that to promote and maintain health, all adults need moderate-intensity aerobic physical activity for a minimum of 30 minutes on five days each week, or vigorous-intensity aerobic activity for a minimum of 20 minutes on three days each week [5]. Combinations of moderate- and

vigorous-intensity aerobic activity can be performed to meet these recommendations [5].

Population-based studies have shown that sedentary behaviour is associated with higher levels of cardio-metabolic and inflammatory biomarkers [6] and higher all-cause mortality [7]. Physical inactivity is associated with higher risk for cardiovascular disease [8]. Patients undergoing cardiac surgery have reduced lung function postoperatively, and often suffer from postoperative complications such as atelectasis and pleural effusion [9-12]. Patients who are sedentary preoperatively have longer hospital stay and a higher risk of postoperative pulmonary complications and mortality, compared to physically active patients [13,14].

It has been suggested that there is a positive association between level of physical activity and lung function

* Correspondence: marcus.jonsson@oru.se

¹Department of Physiotherapy, Örebro University Hospital, 701 85 Örebro, Sweden

²Department of Cardiothoracic surgery, Örebro University Hospital, 701 85 Örebro, Sweden

Full list of author information is available at the end of the article

in healthy adults [15], older individuals [16], and patients with chronic obstructive pulmonary disease [17,18]. However, the relationship between physical activity and lung function in patients undergoing cardiac surgery has not been studied.

The purpose of the present study was to describe pre- and postoperative self-reported physical activity and lung function in patients undergoing cardiac surgery. Our hypothesis was that sedentary patients have a more pronounced deterioration in lung function than more active patients.

Methods

Patients were selected from a previous randomized controlled trial by Westerdahl et al. [19], including 313 patients undergoing cardiac surgery at Örebro University Hospital and Uppsala University Hospital, Sweden, between 2007 and 2011. The sample consisted of all patients who had answered a categorical question about physical activity (Table 1) both preoperatively and at two months after cardiac surgery (n = 283). Patients who had not answered the question postoperatively and were excluded (n = 30) did not differ compared to the remaining patients (n = 283), regarding age (p = 0.70), gender (p = 0.83), length of surgery (p = 0.27), or forced expiratory volume in one second (FEV1) (p = 0.62).

All patients were scheduled for non-emergency coronary artery bypass grafting (CABG), valve surgery, or a combination of CABG and valve surgery. The patients underwent cardiac surgery under general anaesthesia, with or without cardiopulmonary bypass, using sternotomy as the surgical incision. All patients received the same pre- and postoperative care and treatment from nursing staff and physiotherapists in the cardiothoracic surgery ward during the hospital stay. This included general care, early mobilisation, analgesia, breathing exercises, and information about postoperative regimens.

Table 1 A four-category scale for assessment of self-reported physical activity during the last month

Sedentary	You spend most of your time sedentary. You walk or are active in some other way for less than 2 hours per week.
Moderate activity	You walk or are active in some other way for at least 2 hours per week, usually without sweating.
Moderate regular exercise	You exercise regularly 1–2 times per week, at least 30 minutes per time, with activity that causes you to sweat.
Regular activity and exercise	You exercise regularly at least 3 times per week, at least 30 minutes per time, with activity that causes you to sweat.

The categorical question was answered preoperatively and two months after cardiac surgery.

Descriptive data (sex, age, weight, height, information on smoking, preoperative ejection fraction, and surgical data) were collected from medical records. Lung function and self-reported level of physical activity were assessed preoperatively and two months after surgery. Measurements of static and dynamic lung function were performed by experienced biomedical technicians at the Department of Physiology (Jaeger MasterScreen PFT/Bodybox, Intramedic AB, Bålsta, Sweden). The tests were performed according to the recommendations of the American Thoracic Society and the European Respiratory Society [20,21]. The patients performed the tests in a sitting position, wearing a nose clip. The highest value of three correctly performed tests was registered. Vital capacity (VC), forced vital capacity (FVC), forced expiratory volume in 1 second (FEV1), inspiratory capacity (IC), functional residual capacity (FRC), residual volume (RV), and total lung capacity (TLC) were assessed. Predicted values were related to age, gender, and height [22,23].

Self-reported leisure-time physical activity during the last month was estimated on a four-category scale (sedentary, moderate activity, moderate regular exercise, and regular activity and exercise; Table 1) modified from the Swedish National Institute of Public Health's national survey [24]. Patients who were sedentary (category 1), or reported a lower postoperative level of activity in comparison with their preoperative level, were compared with patients remaining active (categories 2–4) or reporting a higher level.

Version 21.0 of the SPSS software package (SPSS Inc, Chicago, IL, USA) was used for the statistical analysis. Demographic data were analysed using descriptive statistics. Preoperative and postoperative values for self-reported leisure-time physical activity were compared using the Wilcoxon signed rank test, while values for patients who reported being sedentary or less active postoperatively than preoperatively, and patients who remained active or became more active were compared using the unpaired Student's t-test or the Chi2-test. Postoperative lung function was expressed in terms of percentages of the preoperative values. The level of significance was set at p < 0.05. Written informed consent was obtained from each patient, and the study was approved by the Regional Ethical Review Board in Uppsala (ref 2007/160).

Results

The sample consisted of 231 male (82%) and 52 female patients with a mean age of 67 ± 10 years. Patients underwent isolated CABG (n = 100), aortic and/or mitral valve repair (n = 135), or combination CABG and valve repair (n = 48). Before surgery, the lung function for the whole sample was within the normal range (VC: 91 ±

15% and FEV1: $90 \pm 17\%$ of predicted values). At the two-month follow-up, FEV1 was $93 \pm 11\%$ and FVC $94 \pm 11\%$ ($p < 0.001$) of preoperative values.

Preoperatively, 52 patients (18%) reported being sedentary (Table 2). They had significantly lower lung function than the more active patients (FVC: $84 \pm 15\%$ vs. $89 \pm 15\%$ of predicted values; $p < 0.05$). At the two-month follow-up, 23 patients (8%) reported being sedentary. In comparison to preoperative activity, 113 patients (40%) had a higher self-reported level of physical activity postoperatively ($p < 0.001$), 38 patients (13%) a lower level, and 132 patients (47%) the same level as before (Table 2).

In total, 230 patients (81%) remained active or had become more active two months after surgery. These patients had significantly better recovery of lung function than the 53 patients who remained sedentary or reported a lower categorical level of physical activity two months after surgery, in terms of VC ($94 \pm 11\%$ of preoperative value vs. $91 \pm 9\%$; $p = 0.03$), TLC ($96 \pm 11\%$ vs. $90 \pm 11\%$; $p = 0.01$), and IC ($94 \pm 14\%$ vs. $88 \pm 19\%$; $p = 0.008$) (Table 3, Figure 1). There was no difference in preoperative lung function between the groups (Table 3). The groups were comparable in terms of age, smoking history, preoperative ejection fraction, and surgical variables (Table 4). Patients who remained sedentary or were less active postoperatively had significantly higher body mass index (BMI) than patients who remained active or became more active, as shown in Table 4.

Discussion

In this prospective cohort study, patients who reported being sedentary preoperatively had lower lung function than more active patients. Patients who remained active or increased their level of physical activity two months after surgery had better recovery of lung function than patients who remained sedentary or reported a lower level of physical activity two months postoperatively. To our knowledge, this is the first study investigating self-reported physical activity and lung function in patients undergoing cardiac surgery. The clinical significance of

these results is difficult to interpret. However, even a small postoperative decrease in lung function might be clinically important to patients with high age or pulmonary disease. Besides the well-established positive cardiovascular effects of physical activity, this result indicates a beneficial effect on pulmonary recovery after cardiac surgery.

The patients in our study who remained sedentary or reported a lower level of activity postoperatively had significantly higher BMI than the patients who remained active or increased their level of activity. A high BMI has been associated with postoperative atrial fibrillation [25], superficial infection [26], deep sternal infection [27], and readmission to the intensive care unit [28] after cardiac surgery. The BMI in both groups in our study was below the risk levels reported in these studies. It is not clear if sedentary behaviour is associated with these postoperative complications, but the relationship with higher BMI calls for more research in the area.

The patients in our study reported a higher level of physical activity, as early as two months after surgery; that is, more patients were active after surgery than before. A few studies have investigated physical activity after CABG, with somewhat contradictory results [13,29-31]. In accordance with our data, Markou et al. [30] and Nery et al. [13] reported significantly increased physical activity for the study population one year after CABG, while Nery et al. [31] showed an increase in the number of physically active patients two years after CABG. In contrast, Barandon et al. [29] showed a decrease in physical activity, compared with preoperatively, seven months after CABG. The fact that our sample of patients reported being more physically active postoperatively might be an indication of the positive effect of the cardiac surgery on functional status; that is, the patients had an improved ability to be physically active. This could lead to improved quality of life, a lower incidence of cardiac events, and reduced mortality.

Our sample showed decreased lung function two months after cardiac surgery, in comparison to preoperative values. This impact of cardiac surgery on lung function is in accordance with earlier results [9-12]. Patients who categorized themselves as being sedentary preoperatively had lower lung function, expressed as percent of predicted, than their more active counterparts. This is consistent with the results reported by Sieverdes et al. [32], who studied healthy men. The additional contribution of our results is the fact that the patients who increased or maintained their level of activity had significantly better recovery of lung function than patients who remained sedentary or reduced their level of activity.

Impaired lung function could lead to postoperative pulmonary complications, and has been shown to have an impact on mortality and quality of life [18,33]. These findings point to the importance of preventing or

Table 2 Distribution of individuals in the categories of physical activity, preoperatively and two months after surgery

Level of physical activity	Preoperatively n (%)	Two months after surgery n (%)
Sedentary	52 (18.4)	23 (8.1)
Moderate activity	148 (52.3)	126 (44.5)
Moderate regular exercise	40 (14.1)	48 (17.0)
Regular activity and exercise	43 (15.2)	86 (30.4)

The level of physical activity increased postoperatively ($p < 0.001$).

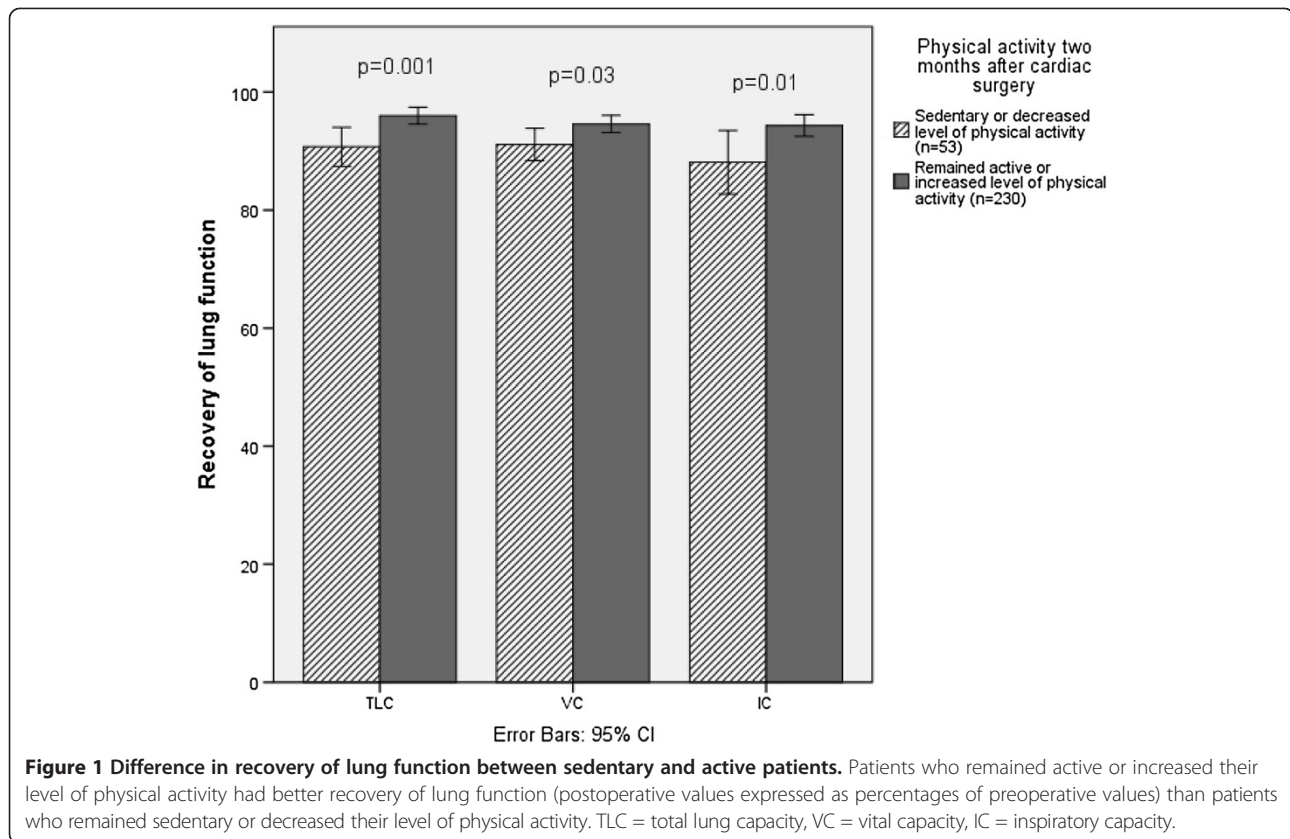
Table 3 Difference in lung function between sedentary or less active and active patients

Variable	Before surgery			Two months after surgery			Difference between groups regarding change after 2 months (95% CI)			
	Sedentary/ less active	Active	p-value	Sedentary/ less active	Active	p-value	Sedentary/ less active	Active	p-value	
	Value (L)	Value (L)		% predicted	% predicted		% preoperative	% preoperative		
VC	3.9 ± 1	4.1 ± 1	0.22	88 ± 15	92 ± 15	0.10	91 ± 9	94 ± 11	3% (0.4 to 7)	0.027*
FVC	3.7 ± 1	3.9 ± 1	0.15	84 ± 15	89 ± 15	0.05	91 ± 10	94 ± 11	3% (-0.3 to 6)	0.076
FEV1	2.8 ± 1	2.9 ± 1	0.22	87 ± 17	90 ± 17	0.21	90 ± 11	93 ± 11	3% (-0.6 to 6)	0.119
IC	3.1 ± 1	3.1 ± 1	0.88	87 ± 20	93 ± 21	0.10	88 ± 19	94 ± 14	6% (2 to 11)	0.008*
FRC	3.3 ± 1	3.5 ± 1	0.19	109 ± 49	99 ± 28	0.06	96 ± 11	98 ± 12	2% (-2 to 6)	0.301
RV	2.6 ± 1	2.5 ± 1	0.64	108 ± 35	100 ± 25	0.05	95 ± 17	97 ± 14	2% (-2 to 7)	0.281
TLC	6.4 ± 1	6.6 ± 1	0.53	93 ± 12	93 ± 12	0.95	90 ± 11	96 ± 11	6% (2 to 9)	0.001*

Sedentary/less active = patients who remained sedentary or decreased their level of activity, two months after surgery. Active = patients who remained active or increased their level of activity two months after surgery.

Data are presented as mean ± SD (95% CI of the difference). The two months values are expressed as percentages of preoperative values. P-value refers to the difference between sedentary/less active (n = 53) and active patients (n = 230). *indicates significant differences (p < 0.05).

VC vital capacity, FVC forced vital capacity, FEV1 forced expiratory volume in one second, IC inspiratory capacity, FRC functional residual capacity, RV residual volume, TLC total lung capacity.



minimizing the impairment of pulmonary function after cardiac surgery. According to our results, a reduction in sedentary time could be one way to achieve this. Sedentary behaviour has been associated with postoperative complications, increased levels of cardio-metabolic and inflammatory biomarkers, and mortality [6,7]. Our results are the first findings indicating that sedentary patients have reduced recovery of lung function after cardiac surgery. This further emphasizes the importance

of reducing sedentary behaviour in patients undergoing cardiac surgery.

A limitation of our study is the use of a self-reported physical activity questionnaire; this is not as exact as the use of more objective methods such as accelerometers or pedometers, and hence could be a source of bias. The categorical question used in our study has not been formally validated for cardiac surgery patients. Another limitation is the relatively small size of the study, and the disparity in

Table 4 Descriptive data for the whole sample, and comparison of sedentary and active patients

Variable	Whole sample (n = 283)	Sedentary or less active (n = 53)	Active (n = 230)	P-value
Sex (male/female)	231/52	39/14	192/38	0.09
Age (years)	67 ± 10	67 ± 9	67 ± 10	0.8
BMI (kg/m ²)	27 ± 4.3	28.5 ± 5	26.8 ± 4	0.01*
Never smoked/ex-smoker/smoker (%)	44/51/5	38/58/4	46/50/4	0.5
EF (%)	54 ± 9	54 ± 9	54 ± 9	0.99
Length of anaesthesia (hours)	10 ± 4	10 ± 3	10 ± 4	0.15
Aortic occlusion (minutes)	79 ± 40	78 ± 41	79 ± 40	0.79
ECC (minutes)	112 ± 50	108 ± 47	113 ± 50	0.52
Length of surgery (hours)	4 ± 1	4 ± 1	4 ± 1	0.97

Sedentary or less active = patients who remained sedentary or decreased their level of activity, two months after surgery. Active = patients who remained active or increased their level of activity. BMI body mass index, EF preoperative ejection fraction, ECC extracorporeal circulation. P-value refers to the difference between sedentary and active patients, *indicates significant differences (p < 0.05).

size between the patient groups. Despite this, we found significant differences in recovery of lung function.

The relationship between postoperative pulmonary recovery and objectively measured physical activity should be further examined, in order to find the minimum level of physical activity needed to reach a clinically relevant improvement in lung function.

Conclusions

An increased level of physical activity, compared to pre-operative level, was reported as early as two months after surgery. Our data shows that there could be a significant association between physical activity and recovery of lung function after cardiac surgery. The relationship between objectively measured physical activity and postoperative pulmonary recovery needs to be further examined to verify these results.

Abbreviations

BMI: Body mass index; CABG: Coronary artery bypass grafting; FEV1: Forced expiratory volume in one second; FRC: Functional residual capacity; FVC: Forced vital capacity; IC: Inspiratory capacity; RV: Residual volume; TLC: Total lung capacity; VC: Vital capacity.

Competing interests

The authors declare no competing interests.

Authors' contributions

MJ participated in the design of the study, performed data collection, performed the statistical analysis, and wrote the manuscript. CU participated in the design of the study, performed data collection, and helped to draft the final manuscript. ME participated in the design of the study and helped to draft the final manuscript. EW participated in the design of the study and the writing of the manuscript. All authors read and approved the final manuscript.

Acknowledgements

Financial support was provided by grants from the Research Committee of Örebro County Council, the Swedish Heart Lung Foundation, the Swedish Heart and Lung Patients National Association, the Swedish Research Council (Reg. no. 2009–1385), Uppsala University, and Uppsala-Örebro Regional Research Council, Sweden.

Author details

¹Department of Physiotherapy, Örebro University Hospital, 701 85 Örebro, Sweden. ²Department of Cardiothoracic surgery, Örebro University Hospital, 701 85 Örebro, Sweden. ³Department of Neuroscience, Physiotherapy, Uppsala University, 751 24 Uppsala, Sweden. ⁴Department of Medical Sciences, Respiratory Medicine and Allergology, Uppsala University, 751 85 Uppsala, Sweden. ⁵School of Health and Medical Sciences, Örebro University, 701 82 Örebro, Sweden.

Received: 10 December 2013 Accepted: 24 March 2014

Published: 28 March 2014

References

- Sattelmair J, Pertman J, Ding EL, Kohl HW 3rd, Haskell W, Lee IM: Dose response between physical activity and risk of coronary heart disease: a meta-analysis. *Circulation* 2011, **124**:789–795.
- Zheng H, Orsini N, Amin J, Wolk A, Nguyen VT, Ehrlich F: Quantifying the dose–response of walking in reducing coronary heart disease risk: meta-analysis. *Eur J Epidemiol* 2009, **24**:181–192.
- Hamer M, Chida Y: Walking and primary prevention: a meta-analysis of prospective cohort studies. *Br J Sports Med* 2008, **42**:238–243.
- Simmons RK, Griffin SJ, Steele R, Wareham NJ, Ekelund U: Increasing overall physical activity and aerobic fitness is associated with improvements in metabolic risk: cohort analysis of the ProActive trial. *Diabetologia* 2008, **51**:787–794.
- Haskell WL, Lee IM, Pate RR, Powell KE, Blair SN, Franklin BA, Macera CA, Heath GW, Thompson PD, Bauman A: Physical activity and public health: updated recommendation for adults from the American College of Sports Medicine and the American Heart Association. *Circulation* 2007, **116**:1081–1093.
- Healy GN, Matthews CE, Dunstan DW, Winkler EA, Owen N: Sedentary time and cardio-metabolic biomarkers in US adults: NHANES 2003–06. *Eur Heart J* 2011, **32**:590–597.
- van der Ploeg HP, Chey T, Korda RJ, Banks E, Bauman A: Sitting time and all-cause mortality risk in 222 497 Australian adults. *Arch Intern Med* 2012, **172**:494–500.
- Zethelius B, Gudbjornsdottir S, Eliasson B, Eeg-Olofsson K, Cederholm J: Level of physical activity associated with risk of cardiovascular diseases and mortality in patients with type-2 diabetes: report from the Swedish National Diabetes Register. *Eur J Prev Cardiol* 2014, **21**:244–251.
- Renault JA, Costa-Val R, Rossetti MB, Houry Neto M: Comparison between deep breathing exercises and incentive spirometry after CABG surgery. *Rev Bras Cir Cardiovasc* 2009, **24**:165–172.
- Westerdahl E, Lindmark B, Bryngelsson I, Tenling A: Pulmonary function 4 months after coronary artery bypass graft surgery. *Respir Med* 2003, **97**:317–322.
- Westerdahl E, Lindmark B, Eriksson T, Hedenstierna G, Tenling A: The immediate effects of deep breathing exercises on atelectasis and oxygenation after cardiac surgery. *Scand Cardiovasc J* 2003, **37**:363–367.
- Yanez-Brage I, Pita-Fernandez S, Juffe-Stein A, Martinez-Gonzalez U, Pertega-Diaz S, Mauleon-Garcia A: Respiratory physiotherapy and incidence of pulmonary complications in off-pump coronary artery bypass graft surgery: an observational follow-up study. *BMC Pulm Med* 2009, **9**:36.
- Nery RM, Barbisan JN, Mahmud MI: Influence of the practice physical activity in the coronary artery bypass graft surgery results. *Rev Bras Cir Cardiovasc* 2007, **22**:297–302.
- Noyez L, Biemans I, Verkroost M, van Swieten H: Is a sedentary lifestyle an independent predictor for hospital and early mortality after elective cardiac surgery? *Neth Heart J* 2013, **21**:439–445.
- Cheng YJ, Macera CA, Addy CL, Sy FS, Wieland D, Blair SN: Effects of physical activity on exercise tests and respiratory function. *Br J Sports Med* 2003, **37**:521–528.
- Amara CE, Koval JJ, Paterson DH, Cunningham DA: Lung function in older humans: the contribution of body composition, physical activity and smoking. *Ann Hum Biol* 2001, **28**:522–536.
- Pitta F, Takaki MY, Oliveira NH, Sant'anna TJ, Fontana AD, Kovelis D, Camillo CA, Probst VS, Brunetto AF: Relationship between pulmonary function and physical activity in daily life in patients with COPD. *Respir Med* 2008, **102**:1203–1207.
- McGlone S, Venn A, Walters EH, Wood-Baker R: Physical activity, spirometry and quality-of-life in chronic obstructive pulmonary disease. *COPD* 2006, **3**:83–88.
- Westerdahl E, Urell C, Jonsson M, Bryngelsson IL, Hedenstrom H, Emtner M: Deep breathing exercises performed 2 months following cardiac surgery: a randomized controlled trial. *J Cardiopulm Rehabil Prev* 2014, **34**:34–42.
- Miller MR, Hankinson J, Brusasco V, Burgos F, Casaburi R, Coates A, Crapo R, Enright P, van der Grinten CP, Gustafsson P, Jensen R, Johnson DC, MacIntyre N, McKay R, Navajas D, Pedersen OF, Pellegrino R, Viegi G, Wanger J, ATS/ERS Task Force: Standardisation of spirometry. *Eur Respir J* 2005, **26**:319–338.
- Wanger J, Clausen JL, Coates A, Pedersen OF, Brusasco V, Burgos F, Casaburi R, Crapo R, Enright P, van der Grinten CP, Gustafsson P, Hankinson J, Jensen R, Johnson D, MacIntyre N, McKay R, Miller MR, Navajas D, Pellegrino R, Viegi G: Standardisation of the measurement of lung volumes. *Eur Respir J* 2005, **26**:511–522.
- Hedenstrom H, Malmberg P, Agarwal K: Reference values for lung function tests in females. Regression equations with smoking variables. *Bull Eur Physiopathol Respir* 1985, **21**:551–557.
- Hedenstrom H, Malmberg P, Fridriksson HV: Reference values for lung function tests in men: regression equations with smoking variables. *Ups J Med Sci* 1986, **91**:299–310.
- Syfte och bakgrund till frågorna i den nationella folkhälsoenkäten. [<http://www.folkhalsomyndigheten.se/pagefiles/12665/Syfte-bakgrund-fragorna-HLV.pdf>]

25. Ho KM, Bertenshaw C, Same S, Schneider M, Williams KA, Godsell T, Hird K: **Differential associations between body mass index and outcomes after elective adult cardiac surgery: a linked data cohort study.** *Anaesth Intensive Care* 2013, **41**:573–583.
26. Heilmann C, Stahl R, Schneider C, Sukhodolya T, Siepe M, Olschewski M, Beyersdorf F: **Wound complications after median sternotomy: a single-centre study.** *Interact Cardiovasc Thorac Surg* 2013, **16**:643–648.
27. Floros P, Sawhney R, Vrtik M, Hinton-Bayre A, Weimers P, Senewiratne S, Mundy J, Shah P: **Risk factors and management approach for deep sternal wound infection after cardiac surgery at a tertiary medical centre.** *Heart Lung Circ* 2011, **20**:712–717.
28. Benetis R, Sirvinskas E, Kumpaitiene B, Kinduris S: **A case-control study of readmission to the intensive care unit after cardiac surgery.** *Med Sci Monit* 2013, **19**:148–152.
29. Barandon L, Calderon J, Lafitte M, Leroux L, Cadusseau JL, Roques X, Couffinhal T: **Assessing cardiovascular risk factors after coronary artery bypass surgery: value of an aggressive strategy including systematic follow-up.** *Arch Cardiovasc Dis* 2008, **101**:155–162.
30. Markou AL, Lasten PJ, Noyez L: **Physical activity post myocardial revascularization. "Will surgery improve my mobility?"** *J Cardiovasc Surg (Torino)* 2007, **48**:201–206.
31. Nery RM, Martini MR, Vidor Cda R, Mahmud MI, Zanini M, Loureiro A, Barbisan JN: **Changes in functional capacity of patients two years after coronary artery bypass grafting surgery.** *Rev Bras Cir Cardiovasc* 2010, **25**:224–228.
32. Sieverdes JC, Sui X, Blair SN: **Associations between physical activity and submaximal cardiorespiratory and pulmonary responses in men.** *J Sports Med Doping Stud* 2011, **1**:102. doi:10.4172/2161-0673.1000102.
33. Nystad W, Samuelsen SO, Nafstad P, Langhammer A: **Association between level of physical activity and lung function among Norwegian men and women: the HUNT study.** *Int J Tuberc Lung Dis* 2006, **10**:1399–1405.

doi:10.1186/1749-8090-9-59

Cite this article as: Jonsson *et al.*: Self-reported physical activity and lung function two months after cardiac surgery – a prospective cohort study. *Journal of Cardiothoracic Surgery* 2014 **9**:59.

Submit your next manuscript to BioMed Central and take full advantage of:

- Convenient online submission
- Thorough peer review
- No space constraints or color figure charges
- Immediate publication on acceptance
- Inclusion in PubMed, CAS, Scopus and Google Scholar
- Research which is freely available for redistribution

Submit your manuscript at
www.biomedcentral.com/submit

