

RESEARCH ARTICLE

Open Access



Quality of life following cardiac rehabilitation in cardiac surgery patients

Ernest Christian Lourens^{1*} , Robert Ashley Baker¹ and Bronwyn M. Krieg¹

Abstract

Background Undergoing cardiac surgery often result in perioperative loss of health-related quality of life (HRQOL). Although participation rates in Australia is low, cardiac rehabilitation (CR) has been demonstrated to improve patient HRQOL in cardiac patients. Literature is unclear regarding the role of CR and HRQOL in the cardiac surgery (CS) patient population.

Methods A prospective non-randomised study was conducted on eligible cardiac surgery patients between December 2009 and March 2015. HRQOL was assessed using the Short Form 12 at baseline and post-operatively at 30 days and 180 days. CR participation was recorded and barriers to CR uptake was assessed using the Cardiac Rehabilitation Enrolment Obstacles (CREO) scale.

Results At 180 days, 107 patients participated in CR and 111 did not participate in CR. A significant improvement from baseline mental and physical HRQOL was observed in both groups at 30 days and 180 days ($p < 0.002$). No significant difference between group characteristics or HRQOL was observed at any time. A trend of superior improvement in mental QOL was observed in the CR group. The study is limited by poor initial uptake (218/1772 of eligible) and may be underpowered to observe a clinical difference. A significant difference in CREO scores were observed between the two groups at 30 days (13 out of 16 questions, $p < 0.001$) and 180 days (11 out of 16 questions, $p < 0.011$).

Conclusion Literature has shown that CR may improve numerous health outcomes in cardiac and CS patients, however CR uptake in Australia is low. Mental and Physical QOL is demonstrated to improve following CS, however further research is required to delineate the role of CR and QOL in CS patients. The CREO tool utilised in this study identified numerous potentially modifiable barriers to CR uptake. Specific strategies related to the survey are suggested to improve awareness, uptake, and adherence to CR, including advocacy of home-based and telehealth services.

Keywords Cardiac surgery, Coronary artery bypass graft, CABG, Health-related quality of life, HRQOL, Cardiac rehabilitation, Barriers to uptake

Introduction

Cardiovascular disease is the largest cause of mortality in the Australian population, with disease sequelae sometimes requiring surgical intervention [1]. Undergoing

cardiac surgery (CS) such as heart valve replacement or coronary artery bypass grafting (CABG) has a significant impact on patients' physical and emotional health. Following disease sequelae and surgical convalescence, patients frequently report a loss of health-related quality of life (HRQOL) and physical functioning before and after surgery [2]. It is therefore important to study post-operative strategies that may improve health outcomes.

Cardiac rehabilitation (CR) is a multi-disciplinary intervention provided to patients following acute coronary syndrome (ACS) or cardiac surgery [3]. Programs

*Correspondence:

Ernest Christian Lourens
Ernest.Lourens@sa.gov.au

¹ CTSU Quality and Outcomes, Flinders Medical Centre, Bedford Park, Adelaide, SA 5042, Australia



© The Author(s) 2022. **Open Access** This article is licensed under a Creative Commons Attribution 4.0 International License, which permits use, sharing, adaptation, distribution and reproduction in any medium or format, as long as you give appropriate credit to the original author(s) and the source, provide a link to the Creative Commons licence, and indicate if changes were made. The images or other third party material in this article are included in the article's Creative Commons licence, unless indicated otherwise in a credit line to the material. If material is not included in the article's Creative Commons licence and your intended use is not permitted by statutory regulation or exceeds the permitted use, you will need to obtain permission directly from the copyright holder. To view a copy of this licence, visit <http://creativecommons.org/licenses/by/4.0/>. The Creative Commons Public Domain Dedication waiver (<http://creativecommons.org/publicdomain/zero/1.0/>) applies to the data made available in this article, unless otherwise stated in a credit line to the data.

typically involve medical evaluation, risk-factor modification, education, prescriptive exercise, counselling and behavioural interventions. The goal of CR is to provide optimal physical and mental conditions, attenuate or reverse disease progression and prevent disability through improved health behaviour [2–4].

Recent studies in CS patients have demonstrated that CR is associated with improved exercise capacity and reduced, all-cause mortality and overall morbidity [2, 4–8]. CR has proven so effective that it has a Level 1A recommendation on the National Health and Medical Research Council level of evidence following ACS [9]. HRQOL following CS is reported in the literature, however the effect of CR is unclear [1, 2]. Anderson et al. [4] investigated CR for coronary heart disease and found in 14 out of 20 of included studies reported an increased HRQOL in one or more HRQOL subscales in CR groups compared with controls, however a meta-analysis could not be undertaken due to heterogeneity of data. In 2009, Lie et al. [9] demonstrated in a randomised control trial a significant increase in HRQOL following CAG in both the control and CR groups, however they reported no meaningful difference between the two groups. Similarly, in a randomised control trial study involving heart valve surgery (n=147) an improvement in exercise capacity following CR was demonstrated, but no difference in HRQOL (SF36) compared to controls [10]. A prospective cohort study conducted in Washington (n=947) found no meaningful improvement in HRQOL due to CR after CABG [11]. More research is therefore required to delineate the role of CR in HRQOL following CS.

Despite the beneficial evidence of CR, uptake and adherence is sub optimal, in Australia CR referral rates have been reported to as low as 46%, with available CR spaces vastly underutilised [3, 12]. At Flinders Medical Centre (FMC) the CR participation rate for the period December 2009 to March 2015 was 28%, identifying a clear need for intervention. There are many barriers to uptake and participation in CR described in literature, some of which will be discussed in this study.

This study aimed to quantify changes in HRQOL following CS in the presence or absence of CR, as well as to identify barriers to CR uptake using the Cardiac Rehabilitation Enrolment Obstacles (CREO) scale.

Materials and methods

Study design

This was a prospective non-randomised study of CS patients at FMC from December 2009 to March 2015. All patients undergoing CABG, mitral valve replacement (MVR), aortic valve replacement (AVR) and transcatheter aortic valve implantation (TAVI) were eligible for

inclusion. The study aimed to include all patients willing to consent, no power calculations were performed. Participants were required to be more than 18 years old, English speaking and be willing and able to sign the informed consent form. Emergency CS procedures were excluded. Patients were able to withdraw from the study at any time.

Ethics approval and consent to participate

Ethics approval was granted by the South Adelaide Health Service / Flinders University, Flinders Clinical Research Ethics Committee, Flinders Medical Centre (FWA0001785) on 5 November 2009. Flinders Medical Centre, Level 6, Ward 6C, Room 6A219, Flinders Drive, Bedford Park, SA 5042. Telephone: +61 8 8204 6061.

Participant assessment

Upon enrolment of participants into the study, a baseline evaluation was completed to determine HRQOL and functional status prior to surgery. Follow-up assessments were completed at 30 days (30d) and 180 days (180d) postoperatively. Patients medical records were reviewed to determine mortality and hospital re-admission status and were contacted via telephone to complete study questionnaires. Data on patient demographics, clinical outcomes and CR program screening and participation was collected in the FMC Cardiac Surgery Registry. Participants underwent routine clinical management in all cases.

Study questionnaires

HRQOL was assessed using the Short Form 12 (SF12) (“Appendix 1”) [14] which has been previously employed in the cardiac patient population [15] and covers domains endorsed by the World Health Organisation as a requisite for a HRQOL measure [16]. Functional status was determined using the New York Heart Association (NYHA) classification [17]. Perceived barriers to CR participation was assessed using the Cardiac Rehabilitation Enrolment Obstacles (CREO) scale [18].

Cardiac rehabilitation program

All patients who underwent CS were invited to attend CR. This study’s CR program was based upon a previously established model [3]. There was no additional cardiac rehabilitation offered to patients who participated in this study. Patients were provided with a Heart Foundation booklet and consulted by a CR team consisting of dietitians, pharmacists, social workers, physiotherapists and CR nurses [19]. Educational sessions (60 min duration) and the group-based exercises circuits (30–60 min) were conducted twice a week for 6 weeks.

Statistical analysis

Health outcomes were entered in the software program IBM SPSS (version 21.0) for statistical analyses. Comparison of between-group difference were done using an independent samples t-test. Normal distribution of data was assessed using the Shapiro–Wilk and Kolmogorov–Smirnov tests prior to computation of results. Analysis of study outcomes were analysed using

a mixed-model analysis of variance for repeated measures. A level of significance of $p=0.05$ was used and Bonferroni-corrected level of significance was applied. Any participant surveys that were incomplete or contained missing data were not included in the analysis. Differences in categorical group characteristics were tested using the Fisher's exact test.

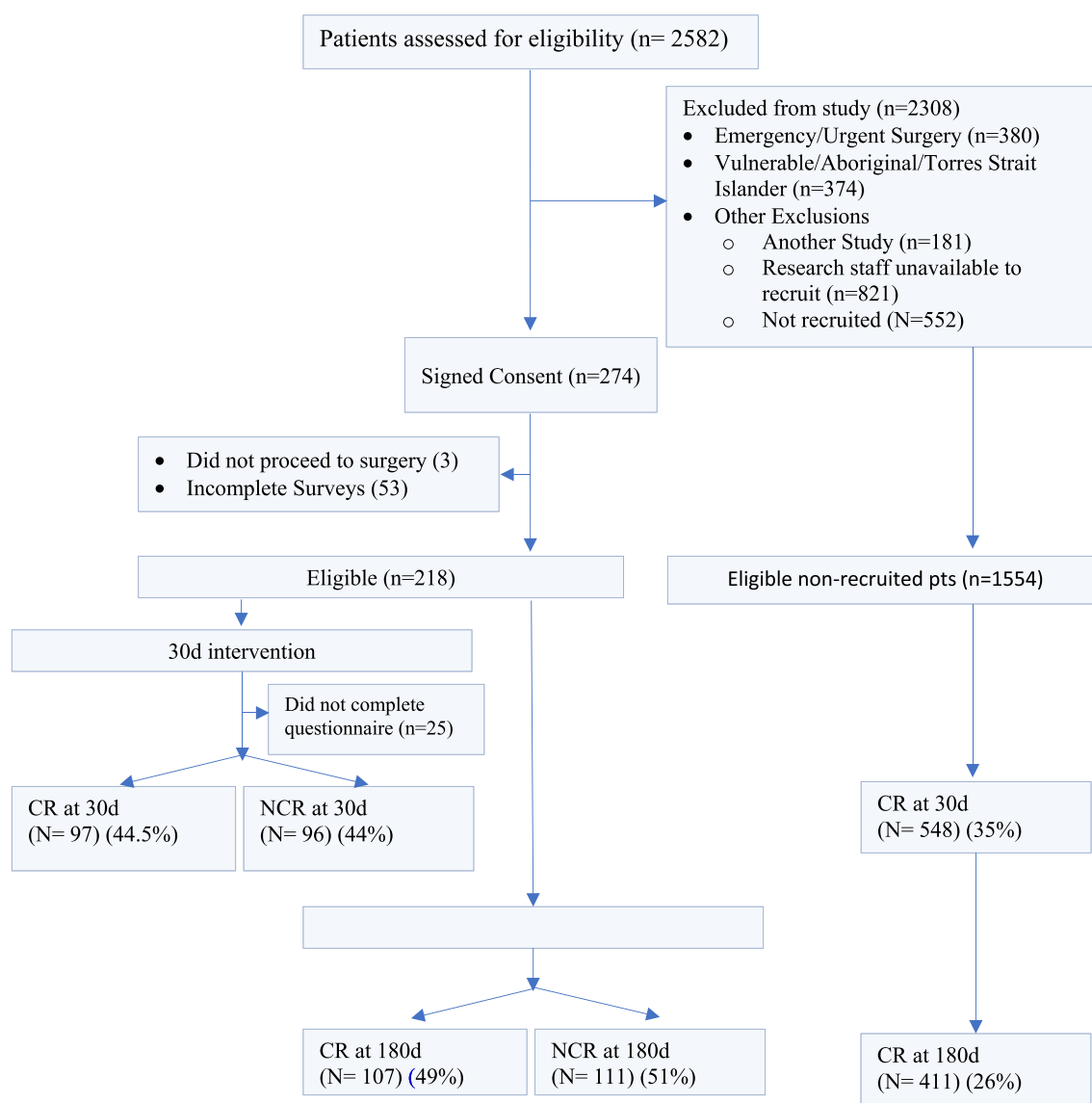


Fig. 1 Consort diagram characteristics of participating patients. The consort diagram illustrates of 2582 patients eligible for Cardiac Surgery (CS), 218 completed sufficient questionnaires. Of those completing questionnaires, 44.5% attended Cardiac Rehab (CR) at 30 days, 11% did not complete a questionnaire and 44% did not complete CR (NCR). At 180 days 49% attended CR, and 51% did not. Of eligible patients who did not complete questionnaires, 35% completed CR at 30 days and 26% at 180 days, identifying a need to address barriers to CR uptake and adherence over 180 days

Table 1 Baseline characteristics of participating patients

	CR	NCR	Sig. ($p=$)
<i>Patient demographics</i>			
Number of participants: (M/F)	107 (69/41)	111 (65/46)	0.526
Age years: mean (SD)	69.01 (11.1)	68.62 (11.0)	0.799
BMI (SD)	29.83 (6.15)	30.10 (6.5)	0.753
Past medical history of:			
T2 diabetes (n)	82	85	0.992
Hypertension	88	93	0.957
CHF	60	60	0.764
Smoking	91	100	0.258
NYHA class (SD)	1.97 (0.9)	1.93 (0.9)	0.743
<i>Procedure type^a</i>			
CAG	44	46	0.962
Aortic valve	56	57	0.883
Mitral valve	17	20	0.675
Percutaneous/TAVI	5	6	0.805
Hospital readmission (all cause)	27	26	0.755

CR = cardiac rehabilitation, NCR = non-cardiac rehabilitation, M/F = male/female, SD = standard deviation (n) = number, CHF = congestive heart failure, NYHA = New York Heart Association Scale (Appendix 3)

^a NB some patients underwent more than one procedure type

Results

Participants

From 15 December 2009 to 16 March 2015, 2582 patients underwent CS at FMC. Of these patients, 218 met the inclusion criteria, agreed to participate in the study and completed the questionnaires (Fig. 1). No statistical differences in baseline characteristics, age, sex, comorbidities, New York Heart Association Scale (NYHA) class or procedure type were observed between the CR and Non-Cardiac Rehabilitation (NCR) groups (Table 1).

SF12 health related quality of life (HRQOL)

There was no significant difference in physical HRQOL between CR and NCR groups at baseline ($p=0.476$), 30d ($p=0.830$) and 180d ($p=0.617$) (Table 2). There was also no significant difference in mental HRQOL between CR and NCR groups at baseline ($p=0.229$), 30d ($p=0.114$) and 180d ($p=0.591$).

A statistically significant difference in mental and physical HRQOL was observed from baseline to 30d and baseline to 180d in CR and NCR groups.

Table 2 CR and NCR physical and mental QOL

CR Group	N=	Mean	SD	Sig. from CR baseline	Sig. from CR 30d	Sig. from NCR
SF12 physical QOL						
Baseline	97	37.51	11.21	–	–	$p=0.476$
30d	97	41.97	8.75	$p=0.002$	–	$p=0.830$
180d	107	47.36	10.00	$p=0.000$	$p=0.000$	$p=0.617$
SF12 mental QOL						
Baseline	97	45.97	12.29	–	–	$p=0.229$
30d	97	53.03	10.86	$p=0.000$	–	$p=0.114$
180d	107	53.91	9.32	$p=0.000$	$p=0.548$	$p=0.591$
NCR Group	N=	Mean	SD	Sig. from NCR baseline	Sig. from NCR 30d	Sig. from CR
SF12 physical QOL						
Baseline	96	36.42	9.93	–	–	$p=0.476$
30d	96	41.71	8.04	$p=0.000$	–	$p=0.830$
180d	111	46.67	10.31	$p=0.000$	$p=0.000$	$p=0.617$
SF12 mental QOL						
Baseline	96	47.98	10.74	–	–	$p=0.229$
30d	96	55.21	7.99	$p=0.000$	–	$p=0.114$
180d	111	54.59	9.32	$p=0.000$	$p=0.672$	$p=0.591$

A statistically significant improvement from 30 to 180d in physical QOL was also observed for both CR ($p=0.000$) and NCR groups ($p=0.000$). A similar trend was not observed in for mental HRQOL. No group showed a relative superior improvement from baseline to 30d or 180d in either physical or mental domains. The NCR group demonstrated an insignificant decline in Mental HRQOL from 30 to 180d ($m=55.21$, $SD=7.99$ to $m=54.59$, $SD=9.32$) whereas the CR group continued to demonstrate an insignificant increase from 30 to 180d ($m=53.03$, $SD=10.86$ to $m=53.91$, $SD=9.32$).

Barriers to participation

Of all study participants, 44.5% attended CR at 30d and 49% by 180d, compared to 35% of non-recruited patients who attended CR at 30 days and 26% at 180 days (Fig. 1). The Cardiac Rehabilitation Enrolment Obstacles (CREO) survey highlighted some of the barriers to the uptake of CR after CS (Fig. 2, “Appendix 2”). A total of 172 (CR=87) participants provided responses at 30d and 211 (CR=103) at 180d. A significant difference was found between CR and NCR group responses in 13 out of 16 questions at 30 days and 11 out of 16 at 180 days (Table 3, Fig. 2). The questions showing the largest variance between the groups included patients responding that they have not been contacted by staff (Q3), personal belief that CR was unnecessary (Q6), live too far from nearest CR centres (Q7), are time poor (Q8), lack motivation (Q11) or dislike group activities (Q15). At 30d and 180d participants in the NCR group also believed the waiting list was too long (Q2), their doctor said it was unnecessary (Q5) and that the class schedules were not suitable (Q9 and Q14). Participants in the NCR group were also more likely to report a lack of family support regarding CR (Q10).

Discussion

Study outcomes

This study demonstrates a significant improvement in physical and mental HRQOL following CS in the CR and NCR groups at 30d and 180d, consistent with current literature demonstrating that CS results in HRQOL improvements [2, 4]. A significant improvement in physical HRQOL was observed from 30 to 180d in both groups suggesting ongoing improvement in QOL following cardiac surgery. However, no statistical differences were observed between the CR and NCR groups

at baseline, 30d or 180d in physical and mental HRQOL categories. These results are consistent with a previous literature review demonstrating that HRQOL improves following CS but with inconclusive evidence that CR following CS improves HRQOL superiorly to control groups [4, 9–11].

Barriers to participating in CR were identified using the CREO, with most questions demonstrating a statistical difference between the CR and NCR group at 30d and at 180d. The validity of CREO as a CR scale has previously been established to have good internal consistency (Cronbach’s $\alpha=0.89$) and divergent validity [18]. Results from this study are similar to Fernandez (2008), demonstrating a significantly poorer CREO scores for CS patients who choose not to participate in CR [18]. The CREO tool provides a helpful way of determining barriers to CR, to date however its report throughout literature is limited [19]. These identified barriers form a basis for intervention to improve future CR uptake and adherence at FMC and other centres.

Strategies to conquer barriers and increase CR uptake

By analysis the results from the CREO data, it is clear that early uptake of CR is largely dependent on participants’ active awareness of the program (Q1), being contacted by CR staff (Q3) and having an early referral and support from their doctor (Q4, Q5). It is therefore a recommended that a streamlined process is put in place where all patients are educated about CR as early as possible during the patient journey, including having immediate access to online, home-based CR resources and telehealth access. By allowing participants to have a bridging online access to CR telehealth education and exercise classes, it reduces the immediate problem of long CR waiting lists (Q2), travel distance from home (Q7), class times beings unsuitable (Q8,Q9), potential conflicts with work schedule (Q14), dislike of group activities (Q15), driving/parking difficulties (Q16) as well as to combat Coronavirus (COVID-19) population health, travel, social distancing and household isolation restrictions [21]. Previous studies have indicated that home-based exercises programmes have higher completion rates and similar efficacy to centre-based classes, therefore providing all patients with home exercise education and regular phone follow-up may reduce CR barriers to uptake and adherence [22, 23]. Similarly, providing patients with written information packs and pre-recorded

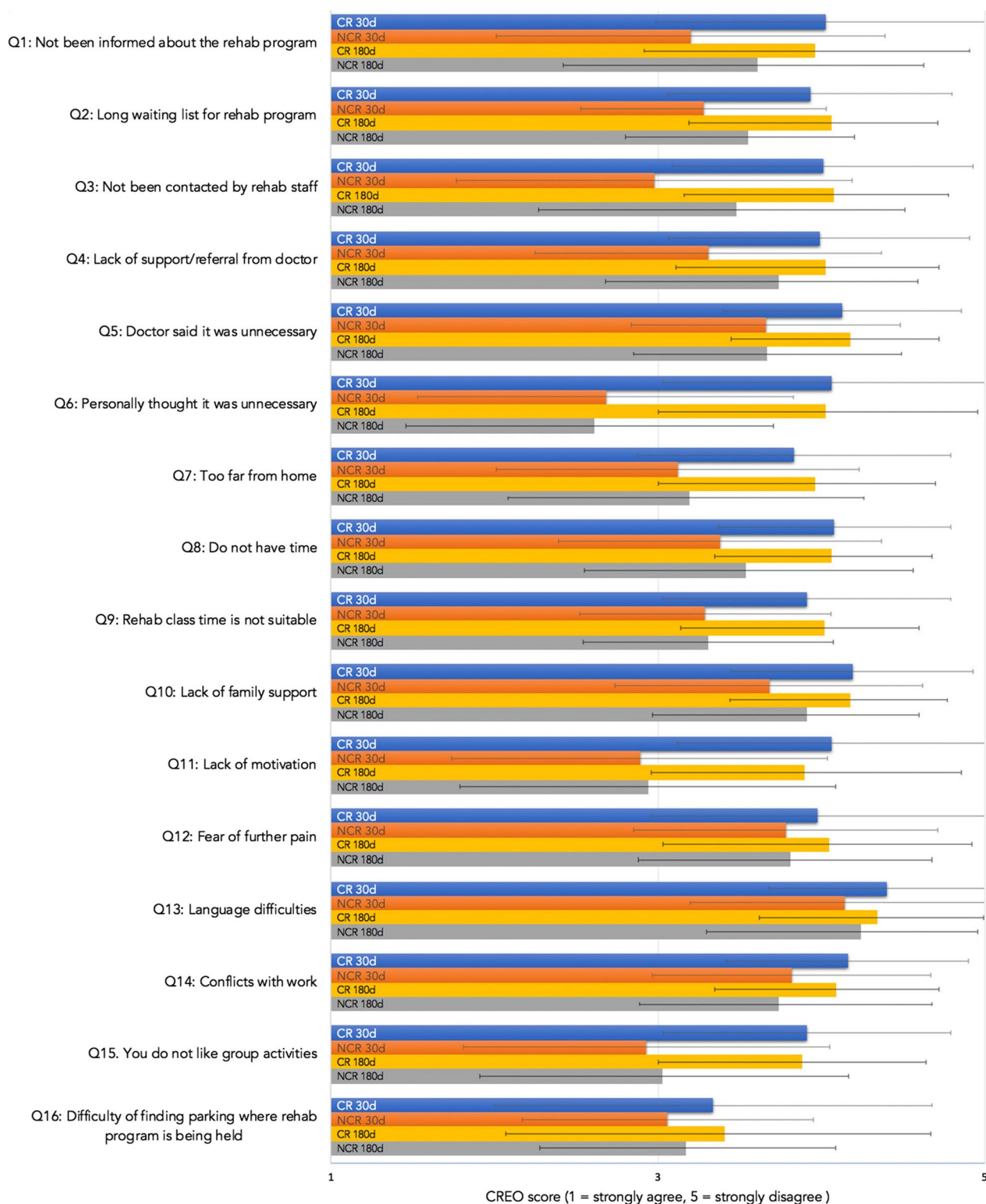


Fig. 2 CREO scores per question for CR and NCR groups at 30d and 180d. Visually demonstrates the data from Table 2; changes in CREO scores from 30 days (30d) to 180 days (180d) in the Cardiac Rehabilitation (CR) and Non-Cardiac Rehabilitation (NCR) groups. A significant difference between CR and NCR groups can be observed in Q1–11 and Q14–15 at 30d and Q2–3, Q5–11 and Q14–15 at 180d

Table 3 CREO scores for CR and NCR at 30d and 180d

	CR (n = 87)		NCR (n = 85)		Sig
	Mean	SD	Mean	SD	
30d					
Question					
Q1: Not been informed about the rehab program	4.03	1.04	3.20	1.19	$p < 0.001$
Q2: Long waiting list for rehab program	3.93	0.87	3.28	0.75	$p < 0.001$
Q3: Not been contacted by rehab staff	4.01	0.92	2.98	1.21	$p < 0.001$
Q4: Lack of support/referral from doctor	3.99	0.92	3.31	1.06	$p < 0.001$
Q5: Doctor said it was unnecessary	4.13	0.73	3.66	0.82	$p < 0.001$
Q6: Personally thought it was unnecessary	4.06	1.03	2.68	1.15	$p < 0.001$
Q7: Too far from home	3.83	0.96	3.12	1.11	$p < 0.001$
Q8: Do not have time	4.08	0.71	3.38	0.99	$p < 0.001$
Q9: Rehab class time is not suitable	3.91	0.88	3.29	0.77	$p < 0.001$
Q10: Lack of family support	4.19	0.74	3.68	0.94	$p < 0.001$
Q11: Lack of motivation	4.06	0.94	2.89	1.15	$p < 0.001$
Q12: Fear of further pain	3.98	1.02	3.78	0.93	$p = 1.000$
Q13: Language difficulties	4.40	0.72	4.14	0.94	$p = 0.147$
Q14: Conflict with work	4.16	0.74	3.82	0.85	$p = 0.047$
Q15: You do not like group activities	3.91	0.88	2.93	1.12	$p < 0.001$
Q16: Difficulty of finding parking	3.34	1.34	3.06	0.89	$p = 0.558$
Total	63.27	9.57	53.20	6.44	$p < 0.001$
	CR (n = 103)		NCR (n = 108)		
	Mean	SD	Mean	SD	
180d					
Question					
Q1: Not been informed about the rehab program	3.96	0.95	3.61	1.02	$p = 0.095$
Q2: Long waiting list for rehab program	4.06	0.65	3.55	0.65	$p < 0.001$
Q3: Not been contacted by rehab staff	4.08	0.70	3.48	1.03	$p < 0.001$
Q4: Lack of support/referral from doctor	4.03	0.69	3.74	0.85	$p = 0.101$
Q5: Doctor said it was unnecessary	4.18	0.54	3.67	0.82	$p < 0.001$
Q6: Personally thought it was unnecessary	4.03	0.93	2.61	1.10	$p < 0.001$
Q7: Too far from home	3.96	0.74	3.19	1.07	$p < 0.001$
Q8: Do not have time	4.06	0.62	3.54	1.02	$p < 0.001$
Q9: Rehab class time is not suitable	4.02	0.58	3.31	0.76	$p < 0.001$
Q10: Lack of family support	4.18	0.59	3.91	0.69	$p = 0.042$
Q11: Lack of motivation	3.90	0.96	2.94	1.15	$p < 0.001$
Q12: Fear of further pain	4.05	0.87	3.81	0.87	$p = 0.390$
Q13: Language difficulties	4.34	0.65	4.24	0.72	$p = 1.000$
Q14: Conflict with work	4.09	0.63	3.74	0.94	$p = 0.011$
Q15: You do not like group activities	3.88	0.76	3.03	1.14	$p < 0.001$
Q16: Difficulty of finding parking	3.41	1.26	3.17	0.92	$p = 0.701$
Total	64.23	5.99	55.54	6.35	$p < 0.001$

Bold indicates $p < 0.05$

educational videos and home exercise instructions may increase exercise adherence and familial support (Q10-11). Dedicated goal-setting, action planning, self-monitoring and regular feedback has also demonstrated to increase CR uptake and adherence [12]. Studies have also shown increased compliance and outcomes when CR participants receive 3–5 text messages per week containing health and lifestyle modification advice [24]. The use of mobile tracking applications and wearable devices to encourage and track physical activity is becoming more readily available and recognised in literature, with recent studies demonstrating up to 87% use adherence study participants [25]. Such devices can aid participants in monitoring their own physical activity in a way which is meaningful to each participant, therefore increasing the likelihood of ongoing adherence (Q6,11). Other strategies described in literature include; automated referrals of all eligible patients, CR referral included in all discharge plans, third-party (e.g. ward-clerk) redundancy check of referral, written invitation provided to patient, comprehensive use of interpreter service, arrangement of transport if required and persistent follow-up of non-attendees [26]. Another barrier to CR is patient belief that CR is unnecessary and lack of motivation (Q6 and 11). It is therefore recommended that CR include directed patient-centric education and goal setting upon diagnosis, that relays the benefits of CR following CS and thereby improve patient belief regarding CR importance and to incite motivation. Finally, recent studies suggest that rehabilitation before surgery (termed prehabilitation) may have numerous improvements in health outcomes including HRQOL and post-operative pulmonary complications [27–30], therefore overall patient health-related outcomes, CR uptake and adherence may be increased if CR is commenced prior to CS.

Limitations

This study had a number of limitations. Of all potentially eligible patients, 12% (218/1772) agreed to participate in the study, while 60% were not approached due to limited research staff availability. The poor participation and requirement capacity exposes this study to potential selection bias. No power calculation was performed prior to study commencement. The

study was designed as a non-randomised, prospective cohort study. Participants were given the choice of CR participation, therefore some patients participated only at 30 or 180 days (not both) and therefore was not included in the final analysis (Fig. 1). Similarly, 13% of the participants did not complete a questionnaire at 30 days, limiting result reliability. Participants who did not complete a questionnaire at 180d were not included in the analysis. It is therefore likely that the sample size was too small to detect group differences in HRQOL at the study endpoints. The study design lacks a reproducible exercise regime, and program adherence was self-reported and not quantified. Future studies may utilise an evidence-based and reproducible CR exercise program as described in literature [26]. This study used the SF12 to assess HRQOL which may not be sensitive enough to detect differences in HRQOL experienced by patients undergoing CR or not. A potentially more sensitive alternative may include the Short Form 36 (SF36), EuroQol EQ-5D or similar [4]. In the context of the current global environment, future studies may benefit from investigating the effect of CR on HRQOL using telehealth, online-resources, home-based CR and self-monitoring using mobile applications and wearable devices.

Conclusion

This study found that patients who undergo cardiac surgery have significant improvement in mental and physical quality of life at 30 days and again at 180 days. Approximately half of the recruited patients participated in cardiac rehabilitation. There was no difference in HRQOL between participants who participated in CR and those who did not. The study is limited by poor initial uptake (218/1772 of eligible) and may be underpowered to observe a clinical difference. Using the CREO tool, a significant difference in responses was found between the CR and NCR group in 13 out of 16 questions at 30 days, identifying numerous potentially modifiable barriers to CR uptake. Specific strategies related to the survey are suggested to improve awareness, uptake, and adherence to CR.

Appendices**Appendix 1: Short Form 12 (SF12)****Patient Initials** _____ **Date of Birth:** ____/____/____**Patient ID:** _____**Surgeon Name:** _____**Date:** _____

Examination Period: _____ Baseline (1)
 _____ 30 days (2)
 _____ 180 days (3)

SF-12®:

This information will help your doctors keep track of how you feel and how well you are able to do your usual activities. Answer every question by placing a check mark on the line in front of the appropriate answer. It is not specific for arthritis. If you are unsure about how to answer a question, please give the best answer you can and make a written comment beside your answer.

1. In general, would you say your health is:

_____ Excellent (1)
 _____ Very Good (2)
 _____ Good (3)
 _____ Fair (4)
 _____ Poor (5)

The following two questions are about activities you might do during a typical day. Does YOUR HEALTH NOW LIMIT YOU in these activities? If so, how much?

2. MODERATE ACTIVITIES, such as moving a table, pushing a vacuum cleaner, bowling, or playing golf:

_____ Yes, Limited A Lot (1)
 _____ Yes, Limited A Little (2)
 _____ No, Not Limited At All (3)

3. Climbing SEVERAL flights of stairs:

_____ Yes, Limited A Lot (1)
 _____ Yes, Limited A Little (2)
 _____ No, Not Limited At All (3)

During the PAST 4 WEEKS have you had any of the following problems with your work or other regular activities AS A RESULT OF YOUR PHYSICAL HEALTH?

4. ACCOMPLISHED LESS than you would like:

_____ Yes (1)
 _____ No (2)

5. Were limited in the KIND of work or other activities:

_____ Yes (1)
 _____ No (2)

During the PAST 4 WEEKS, were you limited in the kind of work you do or other regular activities AS A RESULT OF ANY EMOTIONAL PROBLEMS (such as feeling depressed or anxious)?

6. ACCOMPLISHED LESS than you would like:

_____ Yes (1)
 _____ No (2)

7. Didn't do work or other activities as CAREFULLY as usual:

- ☐ Yes (1)
☐ No (2)

8. During the PAST 4 WEEKS, how much did PAIN interfere with your normal work (including both work outside the home and housework)?

- ☐ Not At All (1)
☐ A Little Bit (2)
☐ Moderately (3)
☐ Quite A Bit (4)
☐ Extremely (5)

The next three questions are about how you feel and how things have been DURING THE PAST 4 WEEKS. For each question, please give the one answer that comes closest to the way you have been feeling. How much of the time during the PAST 4 WEEKS –

9. Have you felt calm and peaceful?

- ☐ All of the Time (1)
☐ Most of the Time (2)
☐ A Good Bit of the Time (3)
☐ Some of the Time (4)
☐ A Little of the Time (5)
☐ None of the Time (6)

10. Did you have a lot of energy?

- ☐ All of the Time (1)
☐ Most of the Time (2)
☐ A Good Bit of the Time (3)
☐ Some of the Time (4)
☐ A Little of the Time (5)
☐ None of the Time (6)

11. Have you felt downhearted and blue?

- ☐ All of the Time (1)
☐ Most of the Time (2)
☐ A Good Bit of the Time (3)
☐ Some of the Time (4)
☐ A Little of the Time (5)
☐ None of the Time (6)

12. During the PAST 4 WEEKS, how much of the time has your PHYSICAL HEALTH OR EMOTIONAL PROBLEMS interfered with your social activities (like visiting with friends, relatives, etc.)?

- ☐ All of the Time (1)
☐ Most of the Time (2)
☐ A Good Bit of the Time (3)
☐ Some of the Time (4)
☐ A Little of the Time (5)
☐ None of the Time (6)

Surgeon Signature _____

Date _____

Appendix 2: Cardiac Rehabilitation Enrolment Obstacles (CREO)

Number	Question	Response: (1–5)*
1	Not been informed about the rehab program	
2	Long waiting list for rehab program	
3	Not been contacted by rehab staff	
4	Lack of support/referral from doctor	
5	Doctor said it was unnecessary	
6	Personally thought it was unnecessary	
7	Too far from home	
8	Do not have time	
9	Rehab class time is not suitable	
10	Lack of family support	
11	Lack of motivation	
12	Fear of further pain	
13	Language difficulties	
14	Conflict with work	
15	You do not like group activities	
16	Difficulty of finding parking where rehab program is being held	

*Response options

- 1 = Strongly agree
 2 = Agree
 3 = Unsure
 4 = Disagree
 5 = Strongly disagree

Appendix 3: New York Heart Association (NYHA) classification

Class	Definition
I	No limitations. Ordinary physical activity does not cause undue fatigue, dyspnoea or palpitations (asymptomatic LV dysfunction)
II	Slight limitation of physical activity. Ordinary physical activity results in fatigue, palpitation, dyspnoea or angina pectoris (mild CHF)
III	Marked limitation of physical activity. Less than ordinary physical activity leads to symptoms (moderate CHF)
IV	Unable to carry on any physical activity without discomfort. Symptoms of CHF present at rest (severe CHF)

Abbreviations

ACS	Acute coronary syndrome
AVR	Aortic valve replacement
CABG	Coronary artery bypass graft
CR	Cardiac rehabilitation
CREO	Cardiac rehabilitation enrolment obstacles
CS	Cardiac Surgery
FMC	Flinders Medical Centre
HRQOL	Health-related quality of life
MVR	Mitral valve replacement

NCR	Non-cardiac rehabilitation
NYHA	New York Heart Association
QOL	Quality of life
SD	Standard deviation
TAVI	Transcatheter aortic valve implantation

Acknowledgements

Not applicable.

Author contributions

ECL, RAB and BMK have contributed to this research (1) conception and design, or acquisition of data, or analysis and interpretation of data, (2) drafting the article or revising it critically for important intellectual content, (3) final approval of the version to be published, and (4) agree to be accountable for all aspects of the work if questions arise related to its accuracy or integrity. All authors read and approved the final manuscript.

Funding

Not applicable.

Availability of data and materials

The datasets used and/or analysed during the current study are available from the corresponding author on reasonable request.

Declarations

Ethics approval and consent to participate

Ethics approval and consent to participate was granted by the South Adelaide Health Service/Flinders University, Flinders Clinical Research Ethics Committee, Flinders Medical Centre (FWA0001785) on 5 November 2009. Flinders Medical Centre, Level 6, Ward 6C, Room 6A219, Flinders Drive, Bedford Park, SA 5042. Telephone: +61 8 8204 6061.

Consent for publication

Not applicable.

Competing interests

The authors declare that they have no competing interests.

Received: 13 December 2021 Accepted: 19 May 2022

Published: 31 May 2022

References

1. Australian Bureau of Statistics. Causes of death 2018 (3303.0). Canberra: Australian Bureau of Statistics; 2019.
2. Sibillitz KL, Berg SK, Tang LH, Risom SS, Gluud C, Lindschou J, Kober L, Hassager C, Taylor RS, Zwisler AD. Exercise-based cardiac rehabilitation for adults after heart valve surgery. *Cochrane Database Syst Rev*. 2016;3:CD010876.
3. Woodruffe S, Neubeck L, Clark RA, Gray K, Ferry C, Finan J, Sanderson S, Briffa TG. Australian Cardiovascular Health and Rehabilitation Association (ACRA) core components of cardiovascular disease secondary prevention and cardiac rehabilitation 2014. *Heart Lung Circ*. 2015;24(5):430–41.
4. Anderson L, Oldridge N, Thompson DR, Zwisler AD, Rees K, Martin N, Taylor RS. Exercise-based cardiac rehabilitation for coronary heart disease: cochrane systematic review and meta-analysis. *J Am Coll Cardiol*. 2016;67(1):1–2.
5. Marcassa C, Giordano A, Giannuzzi P, et al. Five-year hospitalisations and survival in patients admitted to inpatient cardiac rehabilitation after cardiac surgery. *Eur J Prev Cardiol*. 2016;23(15):1609–17.
6. Macchi C, Fattiroli F, Lova RM, Conti AA, Luisi MLE, Intini R, et al. Early and late rehabilitation and physical training in elderly patients after cardiac surgery. *Am J Phys Med Rehabil*. 2007;86(10):826–34.
7. Pollmann AGE, Frederiksen M, Prescott E. Cardiac rehabilitation after heart valve surgery. *J Cardiopulm Rehabil Prev*. 2017;37(3):191–8.
8. Chew DP, Scott IA, Cullen L, French JK, Briffa TG, Tideman PA, Woodruffe S, Kerr A, Branagan M, Aylward PE. National Heart Foundation of Australia

- and Cardiac Society of Australia and New Zealand: Australian clinical guidelines for the management of acute coronary syndromes 2016. *Med J Aust.* 2016;205(3):128–33.
9. Lie I, Arnesen H, Sandvik L, Hamilton G, Bunch EH. Health-related quality of life after coronary artery bypass grafting. The impact of a randomised controlled home-based intervention program. *Qual Life Res.* 2009;18(2):201–7.
 10. Sibillitz KL, Berg SK, Rasmussen TB, Risom SS, Thygesen LC, Tang L, et al. Cardiac rehabilitation increases physical capacity but not mental health after heart valve surgery: a randomised clinical trial. *Heart.* 2016;102(24):1995–2003.
 11. Goss JR, Epstein A, Maynard C. Effects of cardiac rehabilitation on self-reported health status after coronary artery bypass surgery. *J Cardpulm Rehabil.* 2002;22(6):410–7.
 12. Karmali KN, Davies P, Taylor F, Beswick A, Martin N, Ebrahim S. Promoting patient uptake and adherence in cardiac rehabilitation. *Cochrane Database Syst Rev.* 2014;6:CD007131.
 13. Astley CM, Chew DP, Keech W, Nicholls S, Beltrame J, Horsfall M, Tavella R, Tirimacco R, Clark RA. The impact of cardiac rehabilitation and secondary prevention programs on 12-month clinical outcomes: a linked data analysis. *Heart Lung Circ.* 2020;29(3):475–82.
 14. Ware JE Jr, Kosinski M, Keller SD. A 12-Item Short-Form Health Survey: construction of scales and preliminary tests of reliability and validity. *Med Care.* 1996;34:220–33.
 15. Müller-Nordhorn J, Roll S, Willich SJH. Comparison of the short form (SF)-12 health status instrument with the SF-36 in patients with coronary heart disease. *Heart.* 2004;90(5):523–7.
 16. Research WGJQol. Study protocol for the World Health Organization project to develop a Quality of Life assessment instrument (WHOQOL). *Qual Life Res.* 1993;2(2):153–9.
 17. Levin R, Dolgin M, Fox C, Gorlin RJLH. The Criteria Committee of the New York Heart Association: nomenclature and criteria for diagnosis of diseases of the heart and great vessels. *LWW Handb.* 1994;9:344.
 18. Fernandez RS, Salamonson Y, Juergens C, Griffiths R, Davidson P. Development and preliminary testing of the Cardiac Rehabilitation Enrolment Obstacles (CREO) scale: Implications for service development. *Eur J Cardiovasc Nurs.* 2008;7(2):96–102.
 19. Australia HF. My heart my life. 2018. <https://www.heartfoundation.org.au/your-heart/my-heart-my-life>.
 20. Resurreccion DM, Motrico E, Rigabert A, Rubio-Valera M, Conejo-Ceron S, Pastor L, Moreno-Peral P. Barriers for nonparticipation and dropout of women in cardiac rehabilitation programs: a systematic review. *J Womens Health.* 2017;26(8):849–59.
 21. Nicholls S, Nelson M, Astley C, Briffa T, Vale M, Redfern J. Optimising secondary prevention and cardiac rehabilitation for atherosclerotic cardiovascular disease during the COVID-19 pandemic: a position statement by the Cardiac Society of Australia and New Zealand. *Csanze.edu.au.* 2020 [cited 26 April 2020]. <https://www.csanze.edu.au/wp-content/uploads/2020/04/CSANZ-position-statement-Secondary-Prevention-and-Cardiac-Rehabilitation-COVID19-20-April-2020.pdf>.
 22. Shepherd CW, While AE. Cardiac rehabilitation and quality of life: a systematic review. *Int J Nurs Stud.* 2012;49(6):755–71.
 23. Anderson L, Sharp GA, Norton RJ, Dalal H, Dean SG, Jolly K, et al. Home-based versus centre-based cardiac rehabilitation. *Cochrane Database Syst Rev.* 2017;6:CD007130.
 24. Hendriks JM, Gallagher C, Astley C, Linz D, Gallagher R. Cardiac rehabilitation services: A global perspective on performance and barriers. *Int J Cardiol Heart Vasc.* 2019;24:100410.
 25. Clark RA, Foote J, Versace VL, Brown A, Daniel M, Coffee NT, Marin TS, Kourbelis C, Arstall M, Ganesan A, Maddison R. The keeping on track study: exploring the activity levels and utilization of healthcare services of acute coronary syndrome (ACS) patients in the first 30-days after discharge from hospital. *Med Sci.* 2019;7(4):61.
 26. Price KJ, Gordon BA, Bird SR, Benson AC. A review of guidelines for cardiac rehabilitation exercise programmes: is there an international consensus? *Eur J Prev Cardiol.* 2016;23:1715–33.
 27. Marmelo F, Rocha V, Moreira-Gonçalves D. The impact of prehabilitation on post-surgical complications in patients undergoing non-urgent cardiovascular surgical intervention: systematic review and meta-analysis. *Eur J Prev Cardiol.* 2018;25(4):404–17.
 28. Furze G, Dumville JC, Miles JN, Irvine K, Thompson DR, Lewin RJP. “Prehabilitation” prior to CABG surgery improves physical functioning and depression. *Int J Cardiol.* 2009;132(1):51–8.
 29. Santa Mina D, Clarke H, Ritvo P, Leung YW, Matthew AG, Katz J, et al. Effect of total-body prehabilitation on postoperative outcomes: a systematic review and meta-analysis. *Physiotherapy.* 2014;100(3):196–207.
 30. Hulzebos E, Smit Y, Helden P, van Meeteren N. Preoperative physical therapy for elective cardiac surgery patients. *Cochrane Database Syst Rev.* 2012;11:CD010118.

Publisher’s Note

Springer Nature remains neutral with regard to jurisdictional claims in published maps and institutional affiliations.

Ready to submit your research? Choose BMC and benefit from:

- fast, convenient online submission
- thorough peer review by experienced researchers in your field
- rapid publication on acceptance
- support for research data, including large and complex data types
- gold Open Access which fosters wider collaboration and increased citations
- maximum visibility for your research: over 100M website views per year

At BMC, research is always in progress.

Learn more biomedcentral.com/submissions

